

PERFORMING ARTS



INTRODUCTION

A high-angle, blue-tinted photograph of a performer on a stage in front of a large, cheering crowd. The performer, a woman with long dark hair, is wearing a yellow and black patterned dress and is captured in a dynamic pose with one arm raised. The stage is illuminated by blue spotlights, and the background is a dark brick wall. The audience, seen from behind, fills the foreground and sides, with many people raising their hands and holding up phones to capture the moment. The word "INTRODUCTION" is overlaid in large, white, sans-serif capital letters across the center of the image.

Sheaf St is a multi-purpose event space in
Leeds city centre, a performance space, a
bar and a café.

Serving up an eclectic programme of events,
locally sourced fresh food and
fun welcoming happenings
for nice, friendly folk.



SHEAF ST.
EXTERNAL PROMOTER

ETHOS

SHEAFST.COM
@SHEAFSTREET



Sheaf St is a blank canvas space that likes to host a whole variety of events including club nights, gigs, performing arts and private parties across our three different spaces. We are not driven by profit but by a genuine want to curate amazing experiences.

Sheaf St is brought to you by 'The Wunderkind Group', an independent business that also runs;

[Duke Studios](#) – Creative coworking space

[Duke Makes](#) - Digital Fabrication lab

[Testbed](#) - Large event space (Work In Progress)

[In Good Company](#) - Public Art Projects

[BIG DISCO](#) – One day festival for 4,500 people with the world's biggest disco ball.



{WHAT WE DO + WHAT WE DON'T DO}

{WHAT WE DO}

CABARET

PERFORMANCE SHOWCASES

COMEDY

THEATRE SHOWS

FILM SCREENINGS

MARKETS*

TALKS AND GATHERINGS

{WHAT WE DONT DO AT ALL}

WRESTLING SHOWS

ADULT ENTERTAINMENT SHOWS

KIDS ONLY SHOWS

PYROTECHNIC

{WHAT WE DO ELSEWHERE}

GIGS

PRIVATE PARTIES

CLUB NIGHTS

WEDDINGS

{THE DEAL}

We operate an application process for external promoters, reviewing proposals on a case by case basis. We're looking for interesting, exciting and varied bookings.

{HIRE RATES + TIMES}

Mon-Wed £185(inc VAT)*
Thurs or Sun** £250(inc VAT)*

Performing arts events as standard run from
7pm until 11pm

*We offer alternative arrangements for underrepresented
communities

** Extended Sunday hours available

{TICKETS}

100% of ticket sales go to you.
Sheaf St runs the bar and retains all bar profit

{CAPACITY}

40-250*

Please see our layout options
section for details

* Seated cap 110

THE BASICS



SHEAF ST.
EXTERNAL PROMOTER

THE VENUE

SHEAFST.COM
@SHEAFSTREET

{ THE VENUE }

We are in intimate venue with a small team but we have a big output, grand ambitions, and a space that's unrivalled in Leeds in terms of atmosphere and tech fit out.

We host local talent with visits from international artists, often playing to a much more intimate capacity than they usually would.



The Event Space

Our performance space, a highly spec'd and fully renovated former belt factory in the centre of Leeds.

We provide everything you need to run an excellent event with built in bar, cloakroom, toilets and extensive in house tech.

The Yarden

A unique outdoor terrace with treehouse DJ booth, home of the famous 'Yarden Parties'.

From May to September it has its own dedicated sound system and can be used as additional space (restrictions apply). In the non-summer season it acts as an outdoor smoking and chill out area.





SHEAF ST.
EXTERNAL PROMOTER

The Cafe Bar

A café by day, an intimate bar space come early evening/night.

The café is open to the public and cannot be a ticketed space.

SHEAFST.COM
@SHEAFSTREET

PHOTO
EMMA STONE

BOOKING POLICY

SHEAFST.COM
@SHEAFSTREET

{BOOKING POLICY}

Sheaf St. has a booking policy which applies to all internal and external bookings – the policy aims to help address industry wide diversity issues.

{LINE-UPS}

The policy is part of our efforts to ensure line-ups at Sheaf St are varied, diverse, and inclusive. Aiming to readdress the balance of opportunity, both within individual nights, and across our output as a whole.

We expect proposed line-ups to uplift those who are underrepresented in the scene. We want a good gender balance, and diverse backgrounds.

Pay should be fair and all performers should be paid.



{BOOKING PROCESS}

1. Fill out our booking application at the end of this brochure
|
2. Your proposal is reviewed
|
3. We may ask to chat or arrange a meeting
|
4. Successful proposals are offered a date
|
5. You are sent a digital contract and online payment for your deposit
|
6. Your event is confirmed once your deposit clears
|
7. We approve artwork, then your event goes live and tickets go on sale
|
8. We send you an events advancing form to gather info, assets, and tech riders
|
9. Your event takes place
|
10. Ticket income/door takings are paid out



A DJ booth setup featuring a tablet mounted on a stand, a large monitor displaying a DJ software interface, and a professional mixer with various knobs and buttons. The scene is dimly lit with blue and red ambient lighting.

TECH SPECS



SHEAF ST.
EXTERNAL PROMOTER

{SOUND EVENT SPACE}

X4 - POWERSOFT K SERIES AMPS

X4 PIONEER XY218S SUBS

X4 PIONEER XY122 12" PLUS 2" MID HIGHS

X8 PIONEER XY81 8" PLUS 1" MID HIGHS

X4 PIONEER XPRS 12 ACTIVE MONITORS

MIDAS M32 SOUND DESK

{IN-HOUSE DJ EQUIPMENT}

ALL KIT SUPPLY FREE OF CHARGE AT THE DISCRETION OF
SHEAF ST, SUBJECT TO AVAILABILITY

X2 PIONEER DJM900 NEXUS 2

X4 PIONEER CDJ3000

X2 TECHNICS 1210S MK 2

SHEAFST.COM
@SHEAFSTREET

SHEAF ST.
EXTERNAL PROMOTER

{LIGHTING}

FLUORESCENT HOUSE LIGHTS

TOUCH SCREEN PC RUNNING AVOLITES TITAN MOBILE WITH

TITAN MOBILE CONTROLLER

12 X PROLIGHT FLATCOB 80 LED PAR

6 X PROLIGHT CRYSTAL 100W LED MOVING LIGHT FIXTURE

X2 PROLIGHTS ECLIPSE FRESNEL 250W RGB + TUNABLE

WHITE LED + BARN DOORS

9 X CUSTOM MADE LED BATTEN STRIPS

{PROJECTION}

3 X 5M RETRACTABLE PROJECTION SCREENS

3 X FULL HD PROJECTORS - HDMI INPUT ONLY (NO VGA)

POWERED BY RESOLUME 7 ON TRIPLE WIDE SCREEN

- PLEASE REQUEST CORRECT VIDEO FORMAT AND

RESOLUTION.

(WE RUN EVENT VISUAL RUN AT 2880PX X 540PX)

(FILM SCREENINGS RUN ONE CENTRAL HD PROJECTOR)

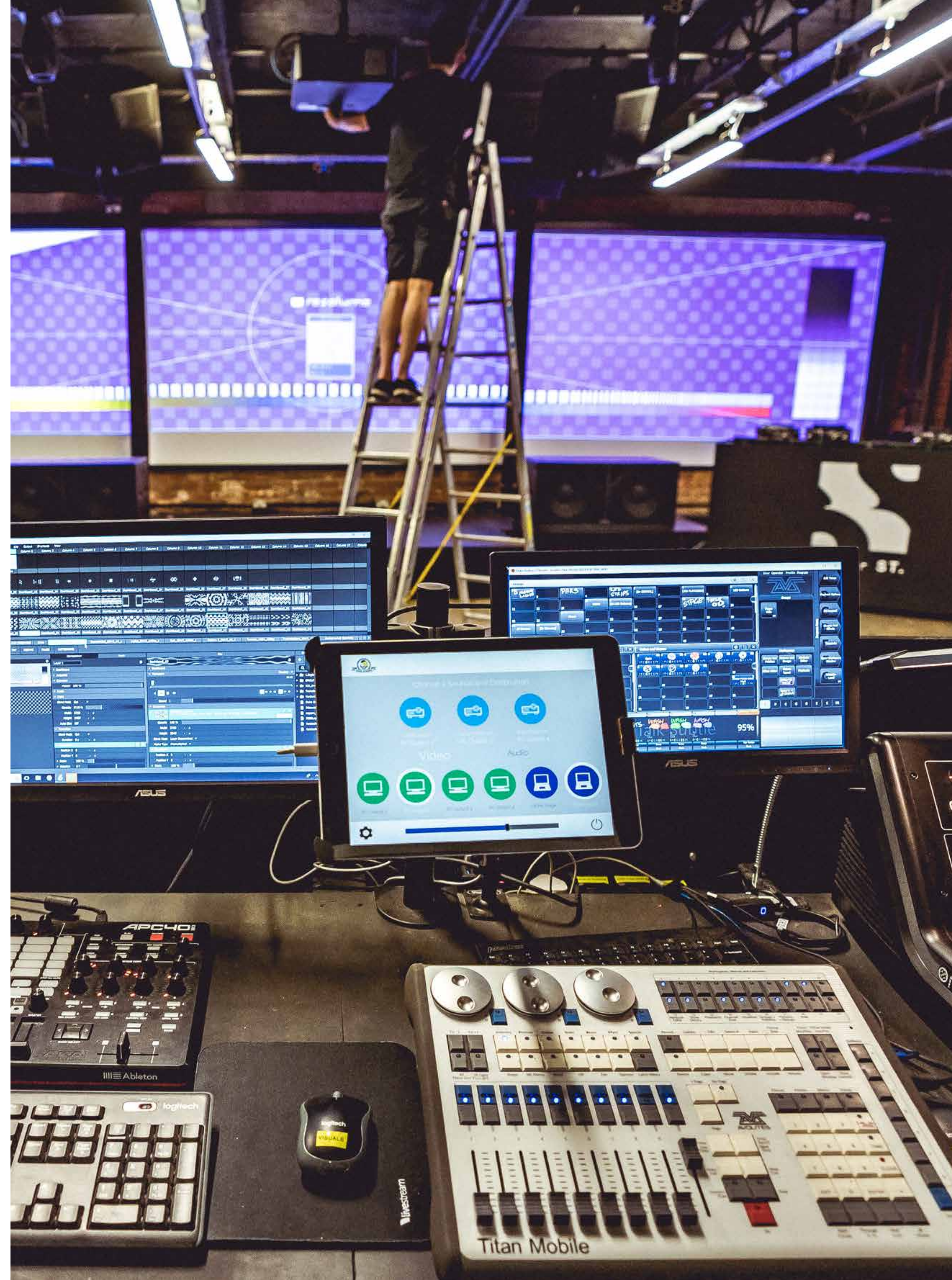
{STAGING AND BOOTH}

X10 1MX1M STAGING BLOCKS

MOVABLE DJ BOOTH.

MULTIPLE SETUP OPTIONS.

SHEAFST.COM
@SHEAFSTREET





SHEAF ST.
EXTERNAL PROMOTER

{BROADBAND}

HIGH SPEED GUEST WI-FI AVAILABLE

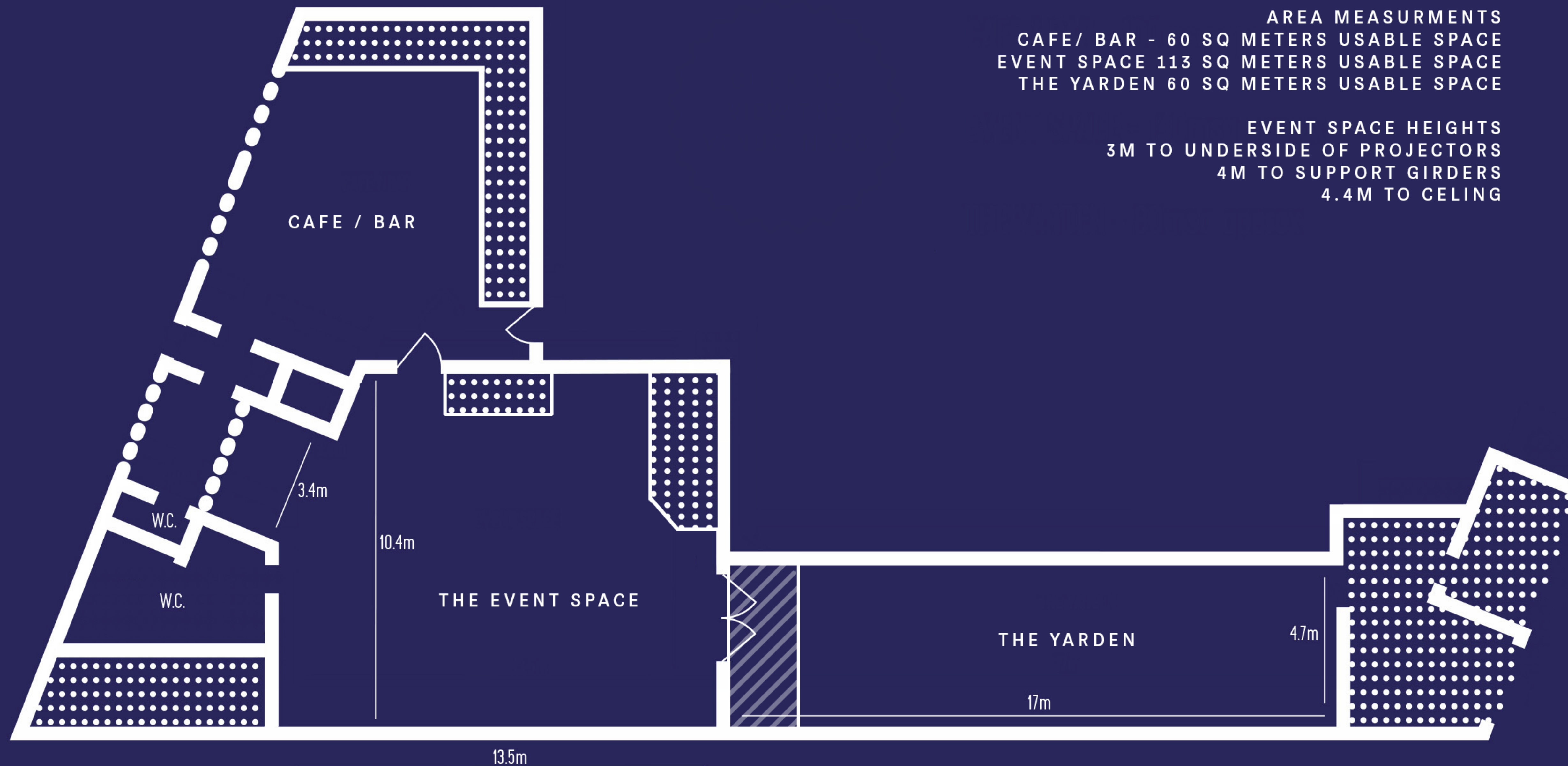
{OTHER ITEMS}

HAZE MACHINE, AIR CON, PORTABLE COOLING FANS, DJ
BOOTH FRIDGE, SIDE TABLES, DJ RISERS, CROWD BARRIER,
OUTDOOR HEATERS, RAIN COVERS, BINS, OUTDOOR
SEATING, COVERED ENTRANCE QUEUE, FACILITIES -
X5 GENDER NEUTRAL TOILETS, X1 3 PERSON URINAL,
X1 ACCESSIBLE TOILET

{LIVE STEAMING}

X3 PERMANENT PTZ CAMERAS
X3 PORTABLE MEVO MINI CAMERA
FULL LIVESTREAM STUDIO WITH RECORDING AND
BROADCAST FACILITIES
(ADDITIONAL COSTS FOR LIVE STREAMING/HYBRID
EVENTS)

SHEAFST.COM
@SHEAFSTREET



LAYOUT OPTIONS





BLANK SPACE

Standing Capacity 250



GIG STANDING

Standing Capacity 200



SMALL CABARET

Seated Capacity 80



LARGE CABARET

Seated Capacity 100



SMALL THEATRE

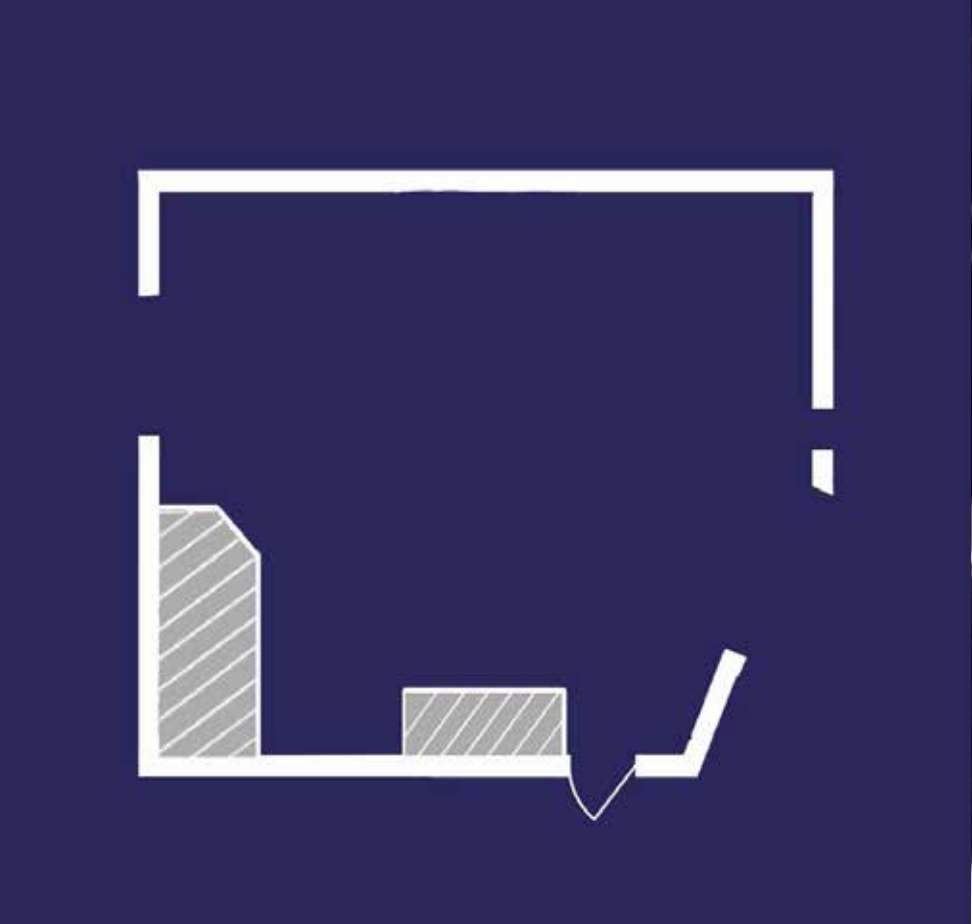
Seated Capacity 50



LARGE THEATRE

Seated Capacity 110

Market Layouts available on request

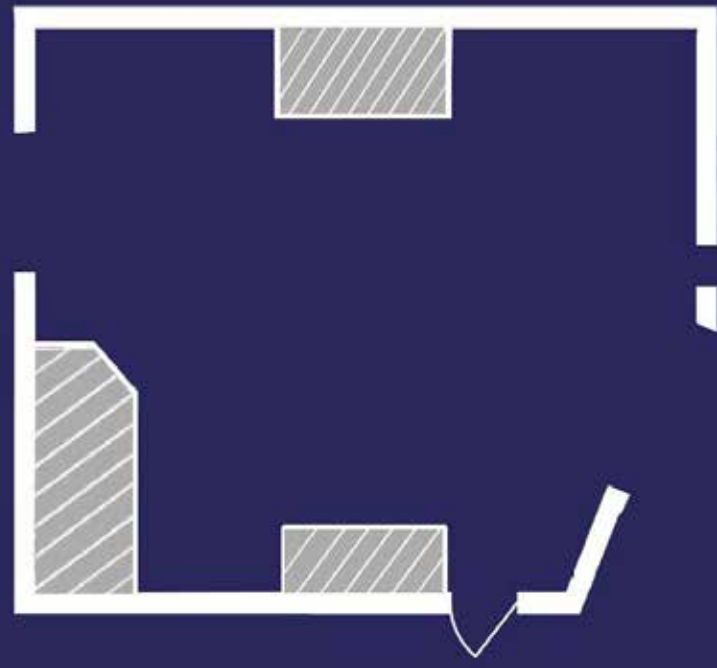


SHEAF ST.
EXTERNAL PROMOTER



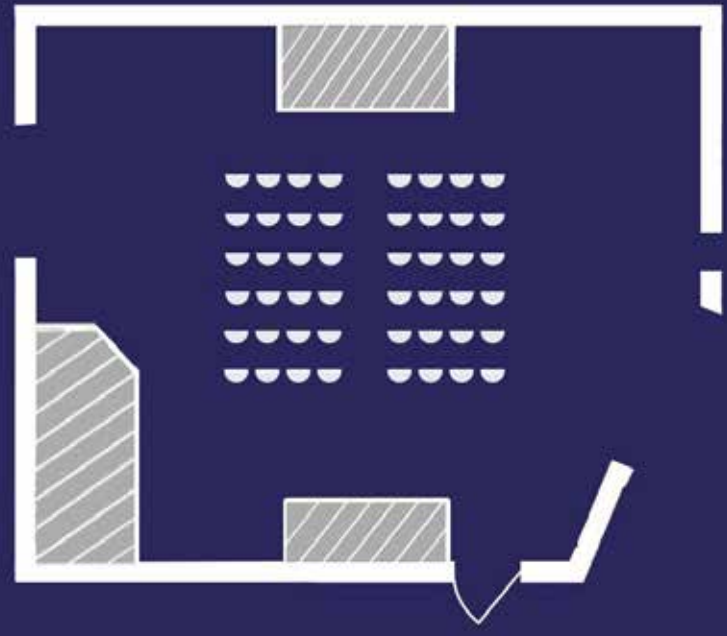
SHEAFST.COM
@SHEAFSTREET

SHEAF ST.
EXTERNAL PROMOTER

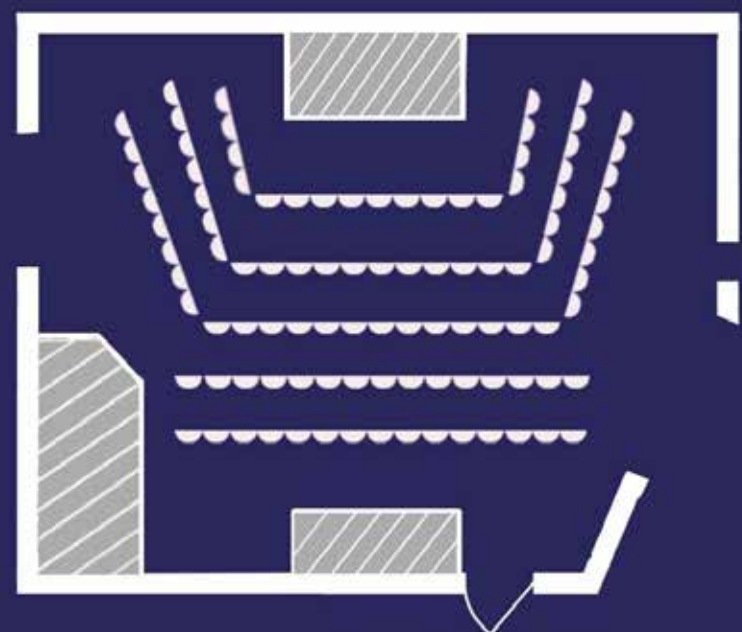


SHEAFST.COM
@SHEAFSTREET

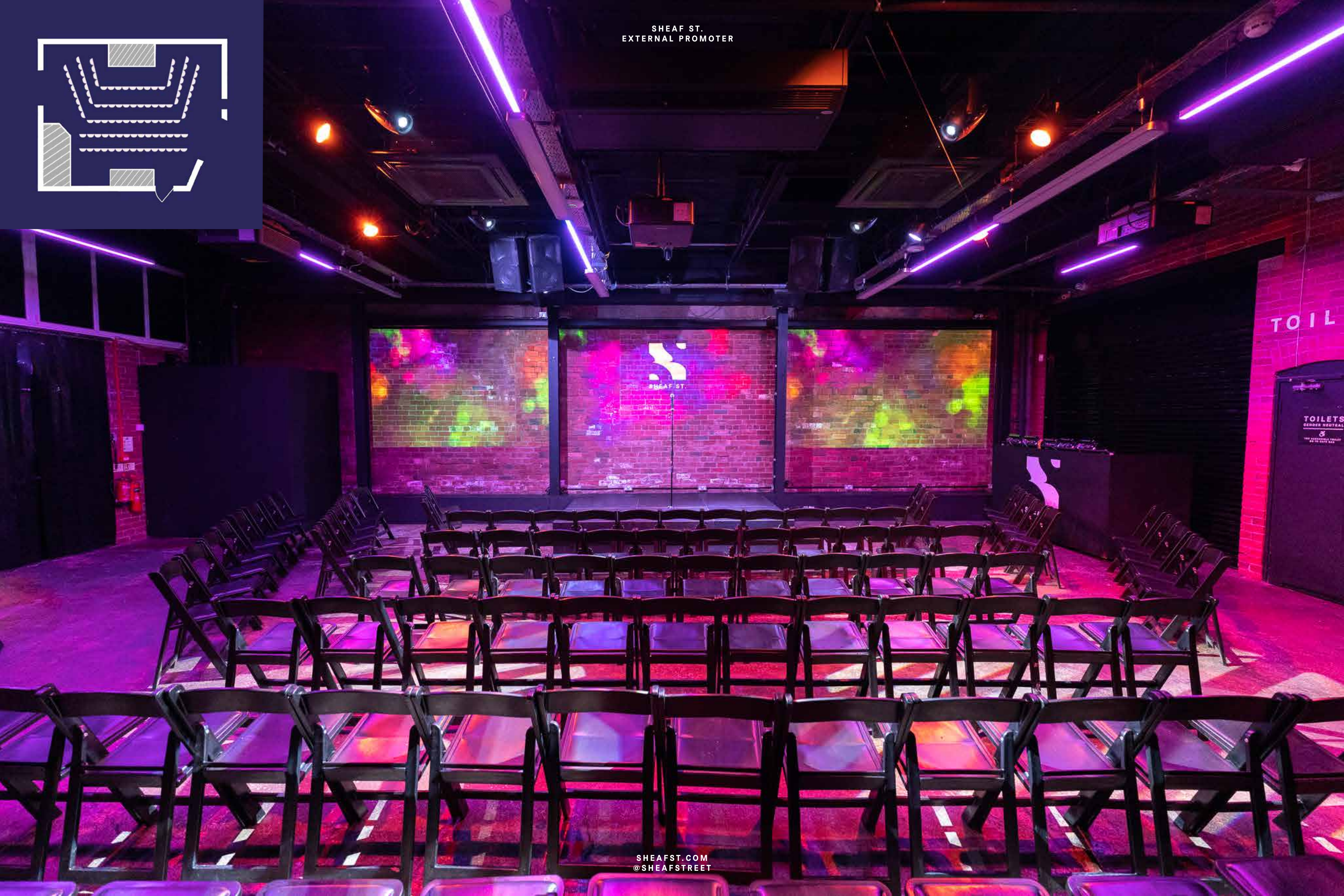
SHEAF ST.
EXTERNAL PROMOTER



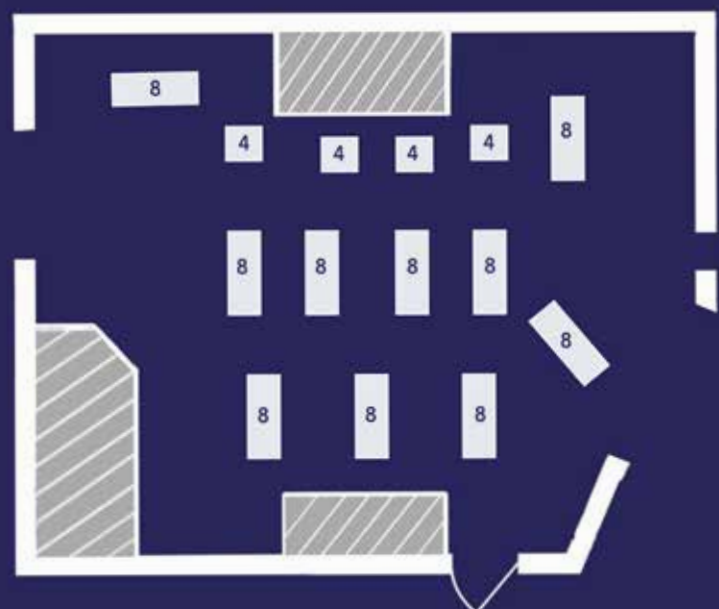
SHEAFST.COM
@SHEAFSTREET



SHEAF ST.
EXTERNAL PROMOTER



SHEAFST.COM
@SHEAFSTREET



SHEAF ST.
EXTERNAL PROMOTER



TOIL

TOILETS
GENDER NEUTRAL
FOR ACCESSIBLE TOILETS
SEE THE EAST END

SHEAFST.COM
@SHEAFSTREET

{MARKETS}

We welcome applications from market holders.

At Sheaf St we have all the bits you need to hold a great market, including 15 trestle tables that work great as long length stalls.

We usually hold markets on Sundays with a hire period of 10am - 4pm.

Market hire starts from £150

For more information email us at Events@sheafst.com



A woman with dark hair, wearing a blue and white patterned dress, is dancing in a club. She is making a hand gesture with her right hand, pointing her index finger towards the camera. The background is dark with colorful lights and a wooden wall. The text "FURTHER INFO" is overlaid in the center in a large, white, sans-serif font.

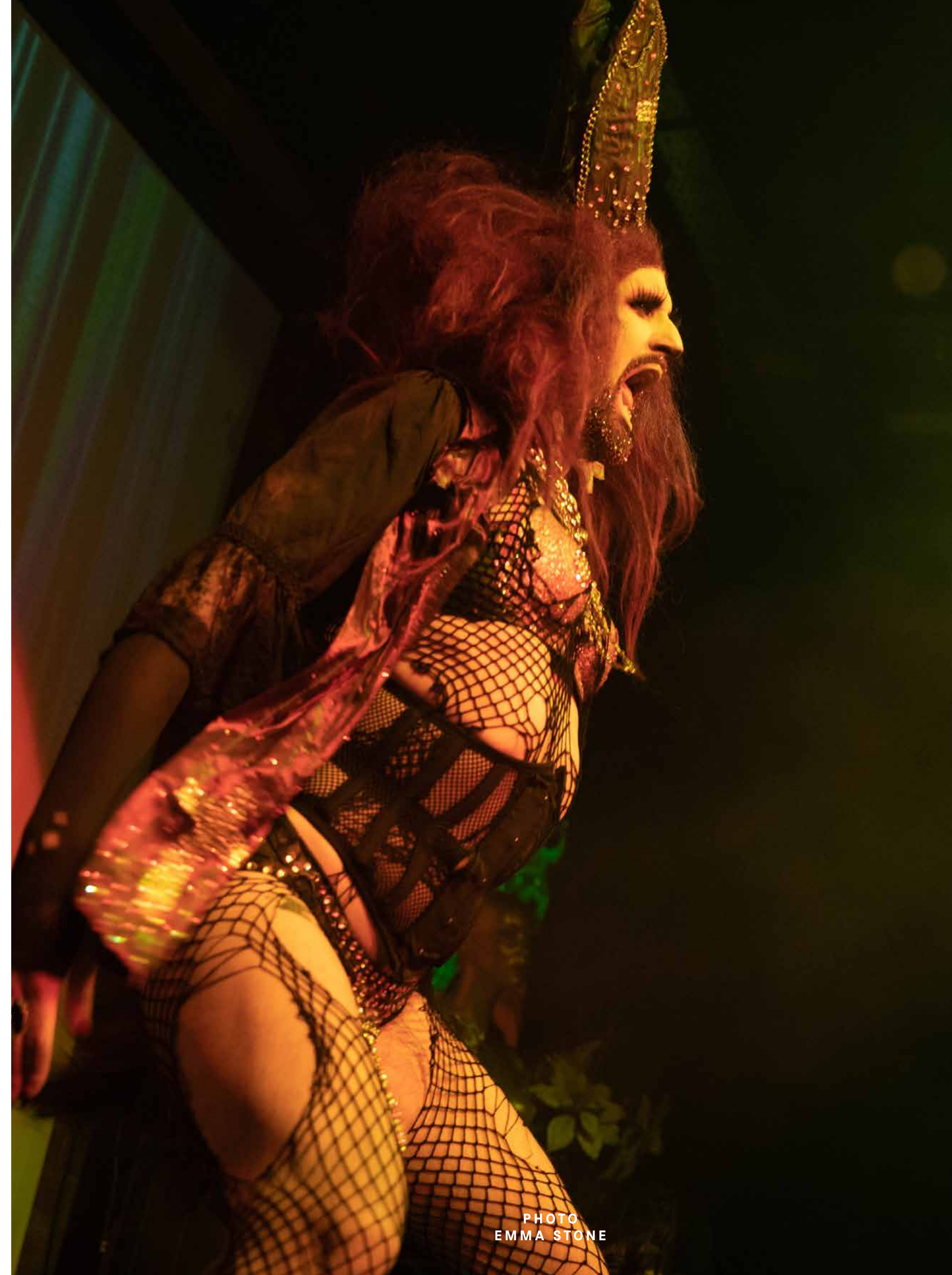
FURTHER INFO

{OPTIONAL EXTRAS}

- Storage pre or post event (POA)
- Additional setup time pre 6pm (£100ph)
- Late Closing - max 2am (£150ph)
- Sound Engineer for Bands (£45 per hour)
- Additional DJ kit (POA)
- Green Room for performers (£75 per hour)
- Additional microphone setups (POA)
- Additional Tech Staff (£30 per hour)
- Additional Security (£20 per hour)
- 32Amp/63Amp power (£100/£300 per day)
- One off fee for live bands (£50)
- Livestreaming (POA)
- Confetti cleanup (£100)

{PROHIBITED}

- Hire of the Sheaf St Cafe Bar
- Bringing any alcohol and drugs onto site
- Any fire or pyrotechnic entertainment





{CASHLESS}

Sheaf St is a completely CASHLESS venue.

We only accept card payments at all bars, the cloakroom and box office. This is standard practice at Sheaf St – it helps keep the venue and staff safe and speeds up the bars. For a full statement please visit

sheafst.com/info

There is no option for cash on the door or box office. We provide equipment for door payments by card. We run event reports on a Tuesday where you will be notified of any card payments on the door. You receive 100% of all ticket sales.

{PLASTIC CUPS}

Sheaf St operates a reusable plastic cup deposit scheme for all events.

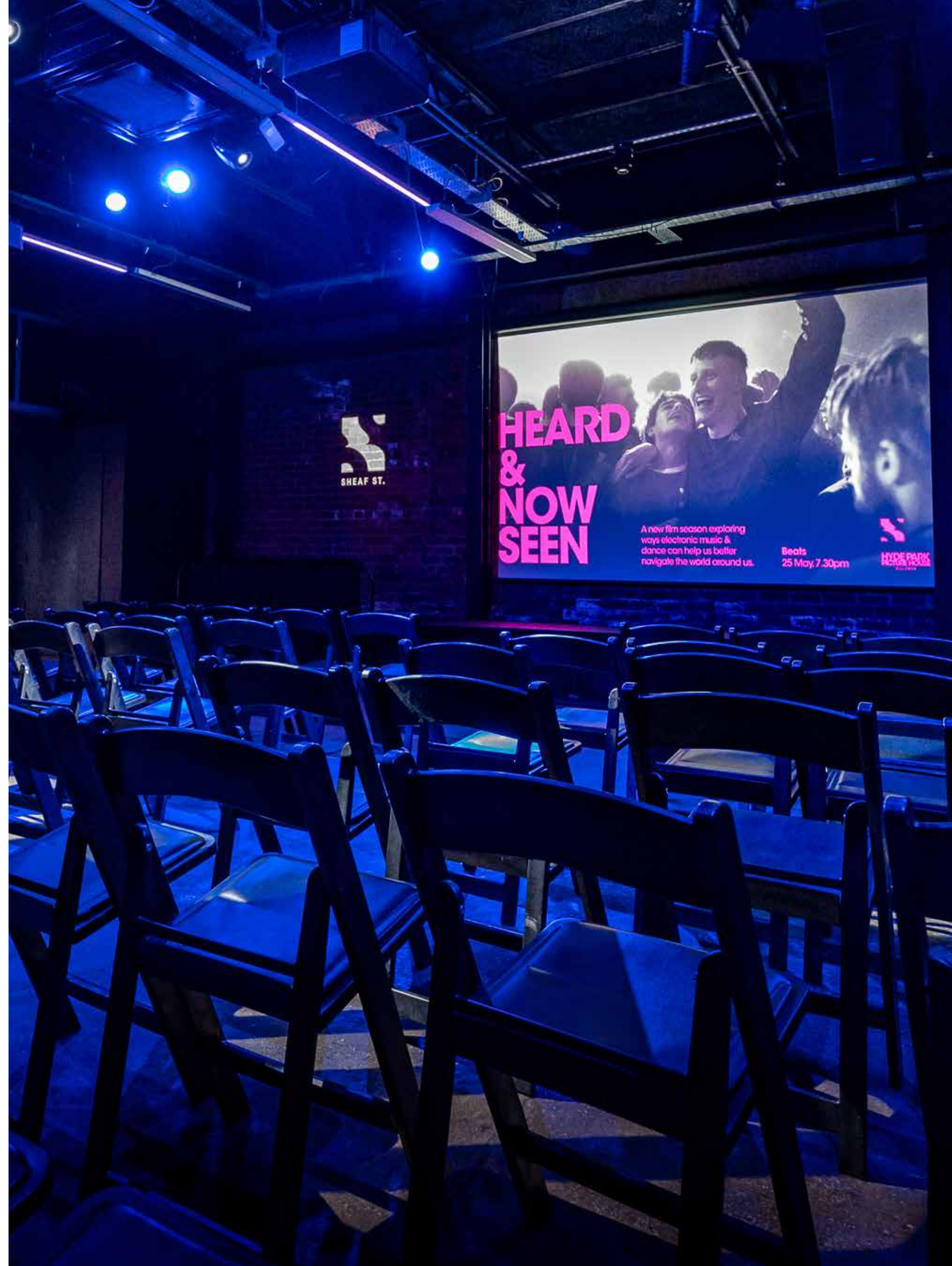
{MARKETING}

The main promotion and audience generation must come from you, the promoter. However, Sheaf St provides:

Facebook co-host listings | Inclusion on our events mail out | Share on instagram story

- A Facebook co-host invite is required
- We guarantee a minimum of one Facebook post and xInstagram story
- We can display dedicated event posters within the venue. You must provide professionally designed and printed posters with approved artwork in A3 (portrait poster) or A5 (flyer) format for them to be used

All venue side promotion relies on prompt and proper marketing assets being provided by the promoters.





{ZERO TOLERANCE POLICY}

Sheaf St. operates a Zero Tolerance Policy. We do not tolerate any harmful or disrespectful behaviours such as : Racism, Misogyny, Homophobia, Transphobia, Ableism, Ageism, Fatphobia.

Sheaf St. does not tolerate the use and consumption of drugs of any kind, unless medical. Our security team will search attendees if applicable.

We expect our promoters to adhere to our policy and be complicit in keeping attendees as safe as possible. Our security team are on hand on the night to help you if any issues arise.

We are a Good Night Out accredited venue, if you feel uncomfortable, please speak to a member of our security or bar team.

We are also part of Atrtitude is Everything Charter of Best Practise.



{ACCESSIBILITY}

Sheaf St. has step free access into the event space and Yarden through our front shutters. There is one step into the building to the cafe.

All toilets are Gender Neutral and there is an accessible toilet towards the back of the building.

We reccomend all our Cabaret bookings are seated to allow access for wheelchairs and mobility aids around the space.

Our sound sytem is built for clubnight level volumes. We provide free ear plugs at the bar for attendees who need them.

There is a hearing loop in the event space, please let us know if you require it.

{DECOR AND DAMAGES}

Decor is permitted providing the venues rules for hanging are adhered to. Decor must be removed immediately after your event.

Damages will be charged

{ARTIST RIDERS}

You are permitted to bring in hospitality riders from outside the venue or purchase them from our bar

Generic riders are limited to 1 x crate of beer/cider (cans only) and 1 bottle of wine, spirits are prohibited from performer riders. For anything above this we must see the headline artists hospitality riders and sign off on this.

{T&Cs}

Successful proposals will be sent a full set of terms and conditions to digitally sign prior to any event confirmation, along with deposit payment. Any breach in the terms and condition will result in the events cancellation and potential further charges.



A photograph of two men performing on stage. The man on the left is bald, wearing sunglasses and a dark jacket, holding a microphone. The man on the right has blue hair and is wearing a colorful patterned shirt, also holding a microphone. They are standing in front of a wooden wall with a decorative lattice. A large green plant is visible on the left. In the foreground, there is a blurred hand and some objects on a table.

FREQUENTLY ASKED QUESTIONS



SHEAF ST.
EXTERNAL PROMOTER

{FAQs}

Q. What is the max capacity?

A. Standing 250

Seated 110

Q. When can we stay open until?

A. 12am as standard, 2am with additional charges

Q. When can we set up

A. Depending on our booking calander, 6pm

Q. Can we leave our decor up

A. Not without additional fees. Decor must be removed after the event

Q. Is the DJ kit included

A. Yes, we have everything you could need - see our tech spec above.

Q. Can we bring own sound system

A. No

Q. Can we bring a smoke machine

A. No, we have an in-house haze machine, no additional smoke/haze is permitted

SHEAFST.COM
@SHEAFSTREET

{FAQs}

Q. What size files do we need for visuals

A. See promoter pack for full details

Q. Can we bring more lighting or FX?

A. As standard, no

Q. Can we take cash on the door

A. No, Sheaf St. is a cashless venue - this is non negotiable.

Q. Can we provide our own security?

A. No, to uphold our licence we supply our own security team.

Q. Do you have a green room?

A. Yes, at an additional charge



CONTACT US

{CONTACT}

[Click here](#)
[to submit a proposal for your night at Sheaf St](#)

You can also contact
events@sheafst.com to request a proposal
form or call us with any queries on
+44 (0)113 245 9487

