



# PERFORMING ARTS



# INTRODUCTION



Sheaf St is a multi-purpose event space in  
Leeds city centre, a performance space, a  
bar and a café.

Serving up an eclectic programme of events,  
locally sourced fresh food and  
fun welcoming happenings  
for nice, friendly folk.





SHEAF ST.  
EXTERNAL PROMOTER

# ETHOS





Sheaf St is a blank canvas space that likes to host a whole variety of events including club nights, gigs, performing arts and private parties across our three different spaces. We are not driven by profit but by a genuine want to curate amazing experiences.

Sheaf St is brought to you by 'The Wunderkind Group' an independent business that also runs

[Duke Studios](#) – Creative coworking space

[Duke Makes](#) - Digital Fabrication lab

[Testbed](#) - Large event space (Work In Progress)

[In Good Company](#) - Public Art Projects

[BIG DISCO](#) – One day festival for 4,500 people with the world's biggest disco ball.





## {WHAT WE DO + WHAT WE DON'T DO}

### {WHAT WE DO}

CABARET

PERFORMANCE SHOWCASES

COMEDY

THEATRE SHOWS

FILM SCREENINGS

TALKS AND GATHERINGS

### {WHAT WE DON'T DO AT ALL}

WRESTLING SHOWS

ADULT ENTERTAINMENT SHOWS

KIDS ONLY SHOWS

PYROTECHNIC

### {WHAT WE DO ELSEWHERE}

GIGS

PRIVATE PARTIES

CLUB NIGHTS

WEDDINGS



## {THE DEAL}

We operate an application process for external promoters, reviewing proposals on a case by case basis. We're looking for interesting, exciting and varied bookings.

## {HIRE RATES + TIMES}

Mon-Wed £185(inc VAT)\*  
Thurs or Sun\*\* £250(inc VAT)\*

Performing arts events as standard run from  
7pm until 11pm

\*We offer alternative arrangements for underrepresented  
communities

\*\* Extended Sunday hours available

## {TICKETS}

100% of ticket sales go to you.  
Sheaf St. runs the bar and retains all bar profit

## {CAPACITY}

40-250\*

Please see our layout options  
section for details

\* Seated cap 110

# THE BASICS





SHEAF ST.  
EXTERNAL PROMOTER

# THE VENUE

SHEAFST.COM  
@SHEAFSTREET



We are in intimate venue with a small team but we have a big output, grand ambitions, and a space that's unrivalled in Leeds in terms of atmosphere and tech fit out.

We host local talent with visits from international artists, often playing to a much more intimate capacity than they usually would.





## The Event Space

Our performance space, a highly spec'd and fully renovated former belt factory in the centre of Leeds.

We provide everything you need to run an excellent event with built in bar, cloakroom, toilets and extensive in house tech.



## The Yarden

A unique outdoor terrace with treehouse DJ booth, home of the famous 'Yarden Parties'.

From May to September it has its own dedicated sound system and can be used as additional space (restrictions apply). In the non-summer season it acts as an outdoor smoking and chill out area.







SHEAF ST.  
EXTERNAL PROMOTER

## The Cafe Bar

A café by day, an intimate bar space come  
early evening/night.  
The café is open to the public and cannot be a  
ticketed space.

SHEAFST.COM  
@SHEAFSTREET



PHOTO  
EMMA STONE

# BOOKING POLICY

SHEAFST.COM  
@SHEAFSTREET



## {BOOKING POLICY}

Sheaf St. has a booking policy which applies to all internal and external bookings – the policy aims to help address industry wide diversity issues.

## {LINE-UPS}

The policy is part of our efforts to ensure line-ups at Sheaf St are varied, diverse, and inclusive. Aiming to readdress the balance of opportunity, both within individual nights, and across our output as a whole.

We expect proposed line-ups to uplift those who are underrepresented in the scene. We want a good gender balance, and diverse backgrounds

Pay should be fair and all performers should be paid.





## {BOOKING PROCESS}

1. Fill out our booking application at the end of this brochure  
|
2. Your proposal is reviewed  
|
3. We may ask to chat or arrange a meeting  
|
4. Successful proposals are offered a date  
|
5. You are sent a digital contract and online payment for your deposit  
|
6. Your event is confirmed once your deposit clears  
|
7. We approve artwork, then your event goes live and tickets go on sale.  
|
8. We send you an events advancing form to gather info, assets, and tech riders.  
|
9. Your event takes place.  
|
10. Ticket income/door takings are paid out.





A DJ booth setup featuring a tablet mounted on a stand, a large monitor displaying a DJ software interface, and a mixer with various knobs and buttons. The scene is dimly lit with blue and red ambient lighting.

# TECH SPECS





SHEAF ST.  
EXTERNAL PROMOTER

## {SOUND EVENT SPACE}

X4 - POWERSOFT K SERIES AMPS

X4 PIONEER XY218S SUBS

X4 PIONEER XY122 12" PLUS 2" MID HIGHS

X8 PIONEER XY81 8" PLUS 1" MID HIGHS

X4 PIONEER XPRS 12 ACTIVE MONITORS

MIDAS M32 SOUND DESK

## {IN-HOUSE DJ EQUIPMENT}

ALL KIT SUPPLY FREE OF CHARGE AT THE DISCRETION OF  
SHEAF ST, SUBJECT TO AVAILABILITY

X2 PIONEER DJM900 NEXUS 2

X4 PIONEER CDJ3000

X2 TECHNICS 1210S MK 2

SHEAFST.COM  
@SHEAFSTREET



SHEAF ST.  
EXTERNAL PROMOTER

## {LIGHTING}

FLUORESCENT HOUSE LIGHTS

TOUCH SCREEN PC RUNNING AVOLITES TITAN MOBILE WITH

TITAN MOBILE CONTROLLER

12 X PROLIGHT FLATCOB 80 LED PAR

6 X PROLIGHT CRYSTAL 100W LED MOVING LIGHT FIXTURE

X2 PROLIGHTS ECLIPSE FRESNEL 250W RGB + TUNABLE

WHITE LED + BARN DOORS

9 X CUSTOM MADE LED BATTEN STRIPS

## {PROJECTION}

3 X 5M RETRACTABLE PROJECTION SCREENS

3 X FULL HD PROJECTORS - HDMI INPUT ONLY (NO VGA)

POWERED BY RESOLUME 7 ON TRIPLE WIDE SCREEN

- PLEASE REQUEST CORRECT VIDEO FORMAT AND

RESOLUTION.

(WE RUN EVENT VISUAL RUN AT 2880PX X 540PX)

(FILM SCREENINGS RUN ONE CENTRAL HD PROJECTOR)

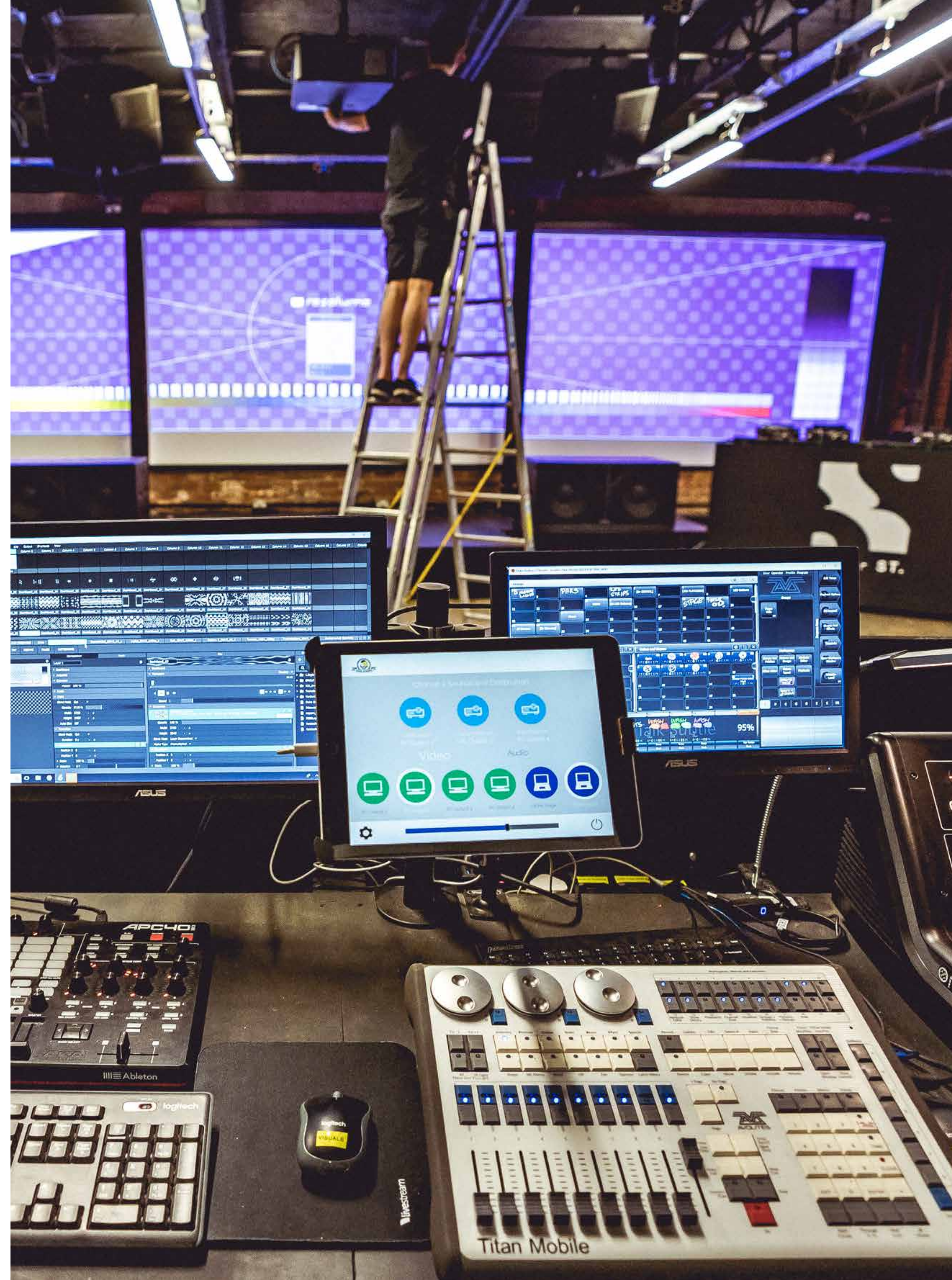
## {STAGING AND BOOTH}

X10 1MX1M STAGING BLOCKS

MOVABLE DJ BOOTH.

MULTIPLE SETUP OPTIONS.

SHEAFST.COM  
@SHEAFSTREET







SHEAF ST.  
EXTERNAL PROMOTER

## {BROADBAND}

HIGH SPEED GUEST WI-FI AVAILABLE

## {OTHER ITEMS}

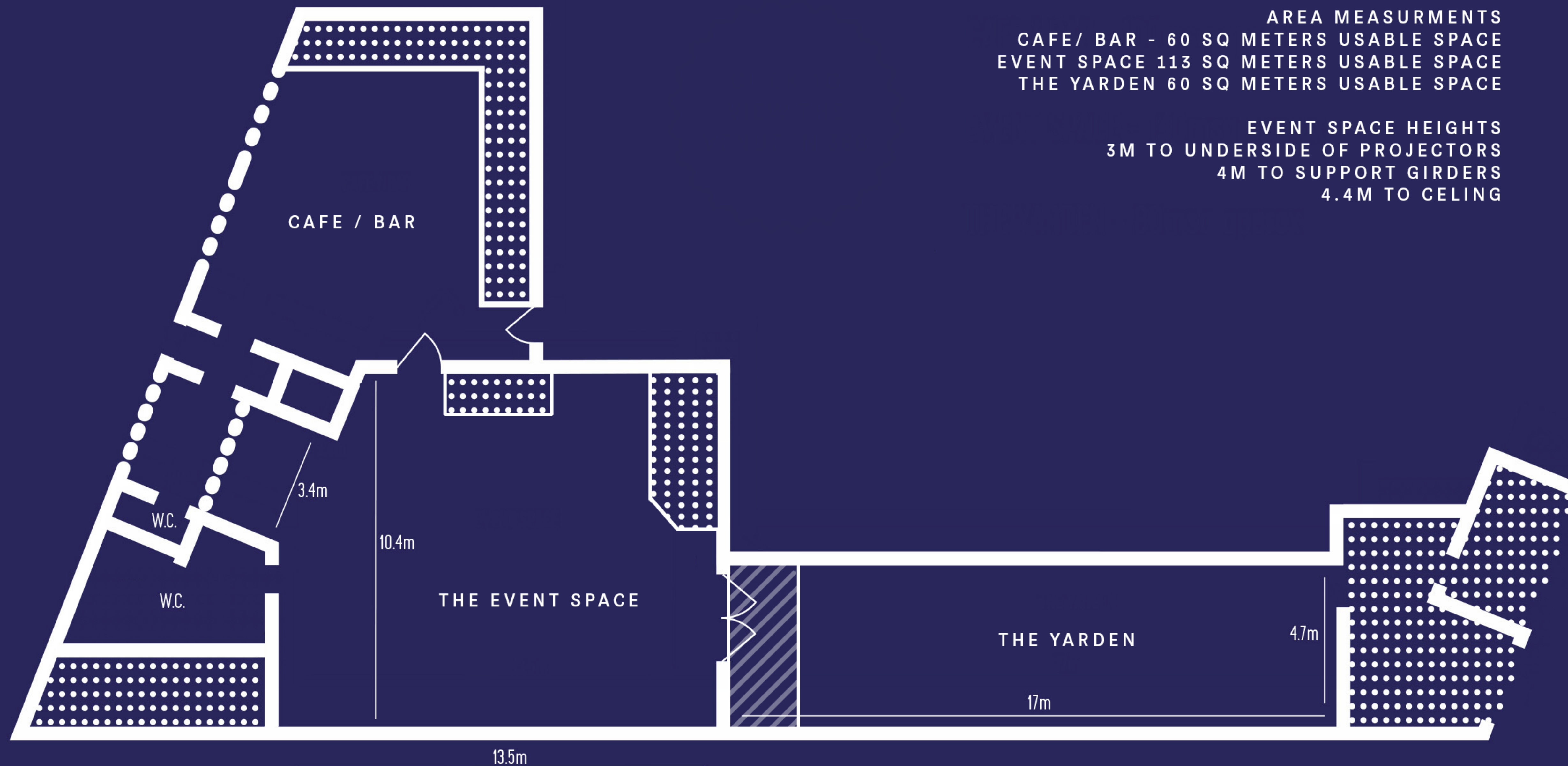
HAZE MACHINE, AIR CON, PORTABLE COOLING FANS, DJ  
BOOTH FRIDGE, SIDE TABLES, DJ RISERS, CROWD BARRIER,  
OUTDOOR HEATERS, RAIN COVERS, BINS, OUTDOOR  
SEATING, COVERED ENTRANCE QUEUE, FACILITIES -  
X5 GENDER NEUTRAL TOILETS, X1 3 PERSON URINAL,  
X1 ACCESSIBLE TOILET

## {LIVE STEAMING}

X3 PERMANENT PTZ CAMERAS  
X3 PORTABLE MEVO MINI CAMERA  
FULL LIVESTREAM STUDIO WITH RECORDING AND  
BROADCAST FACILITIES  
(ADDITIONAL COSTS FOR LIVE STREAMING/HYBRID  
EVENTS)

SHEAFST.COM  
@SHEAFSTREET







# LAYOUT OPTIONS







## BLANK SPACE

Standing Capacity 250



## GIG STANDING

Standing Capacity 250



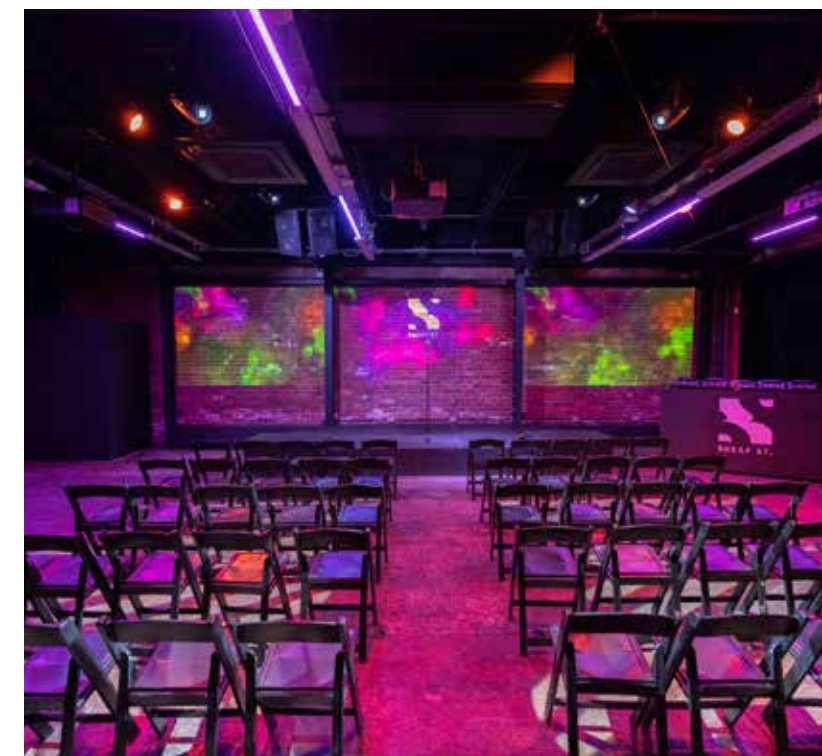
## SMALL CABARET

Seated Capacity 80



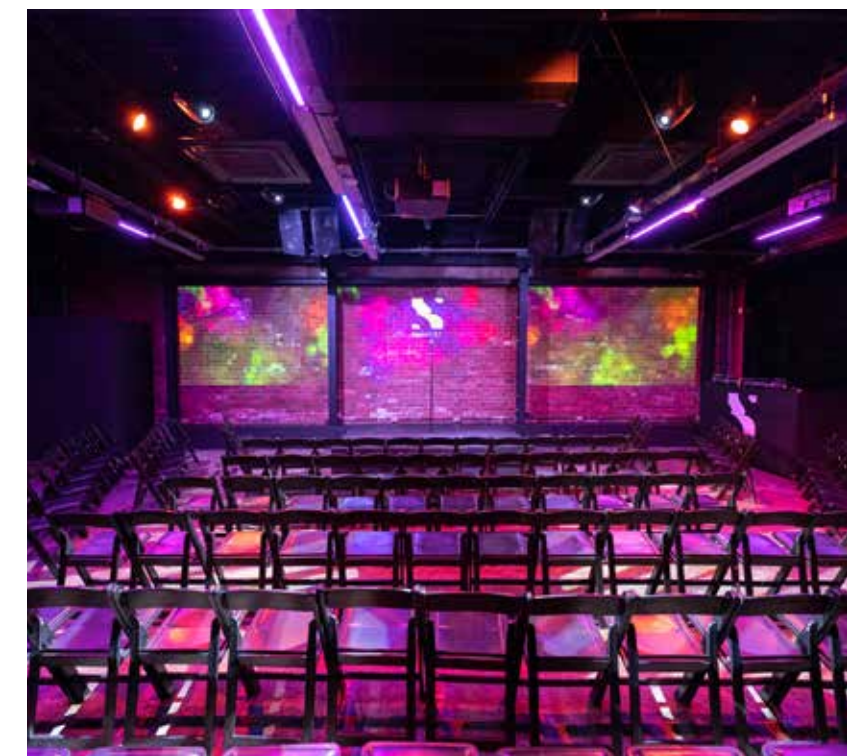
## LARGE CABARET

Seated Capacity 100



## SMALL THEATRE

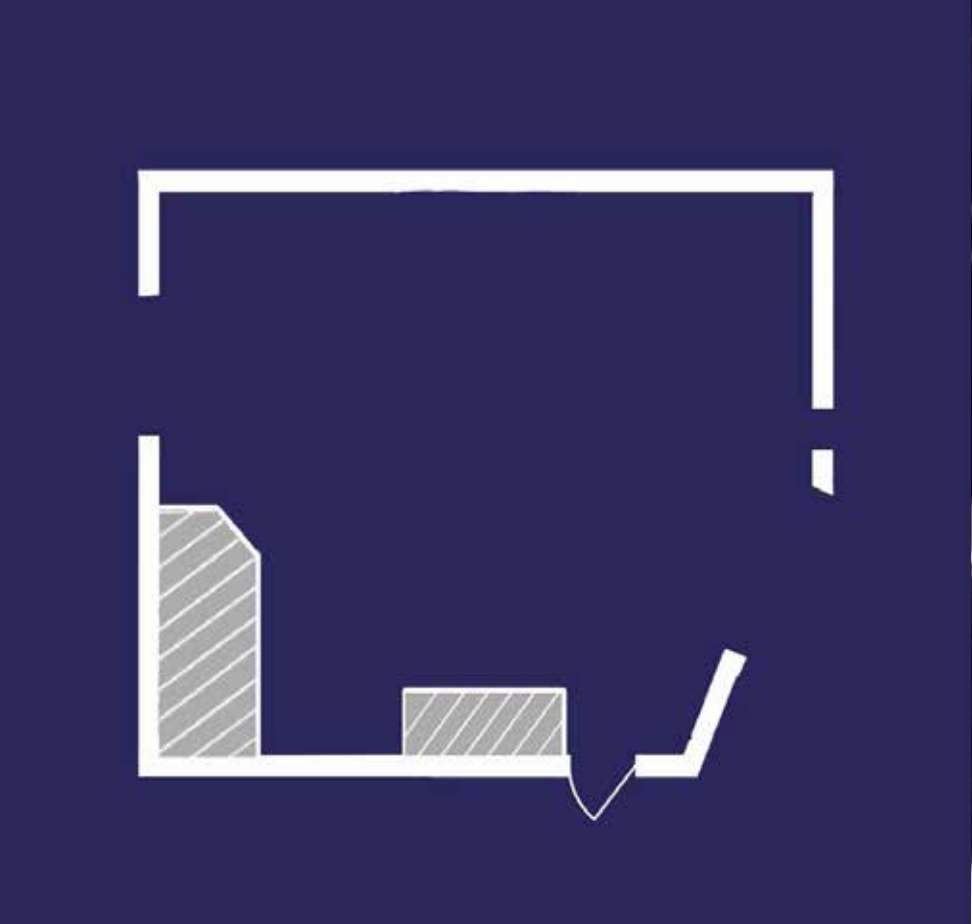
Seated Capacity 48



## LARGE THEATRE

Seated Capacity 100





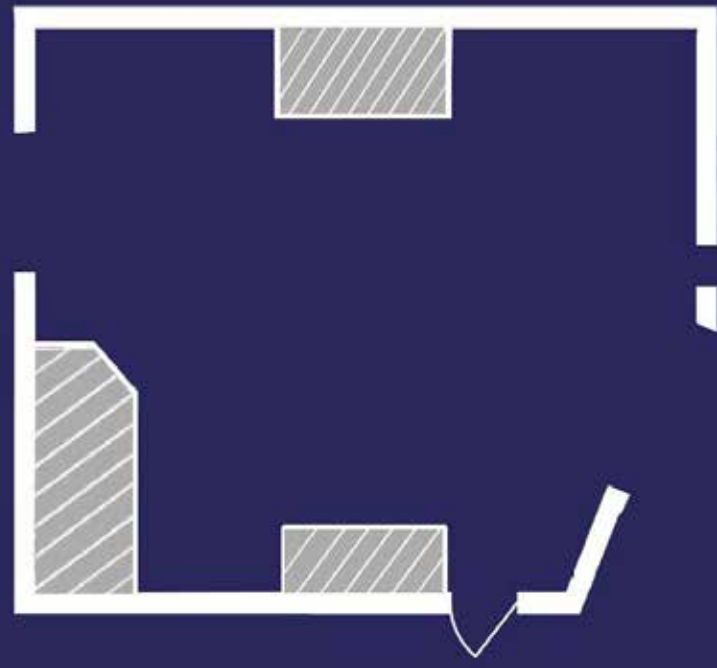
SHEAF ST.  
EXTERNAL PROMOTER



SHEAFST.COM  
@SHEAFSTREET



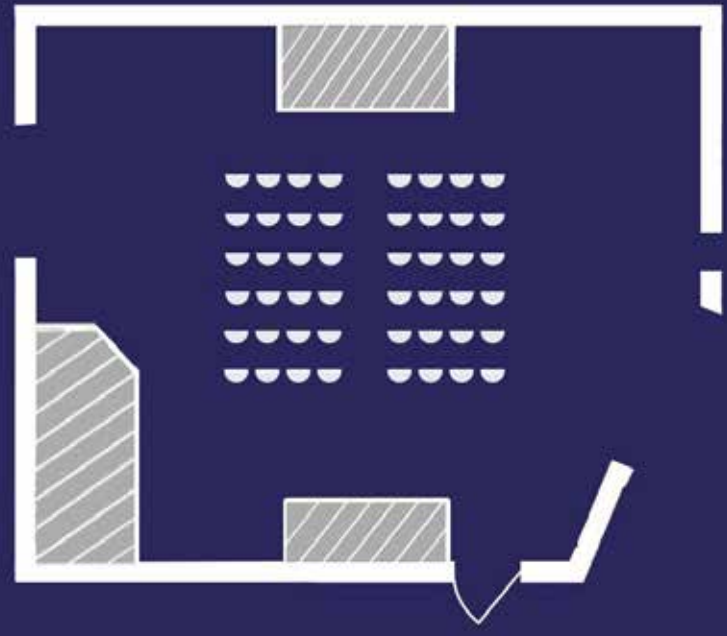
SHEAF ST.  
EXTERNAL PROMOTER



SHEAFST.COM  
@SHEAFSTREET

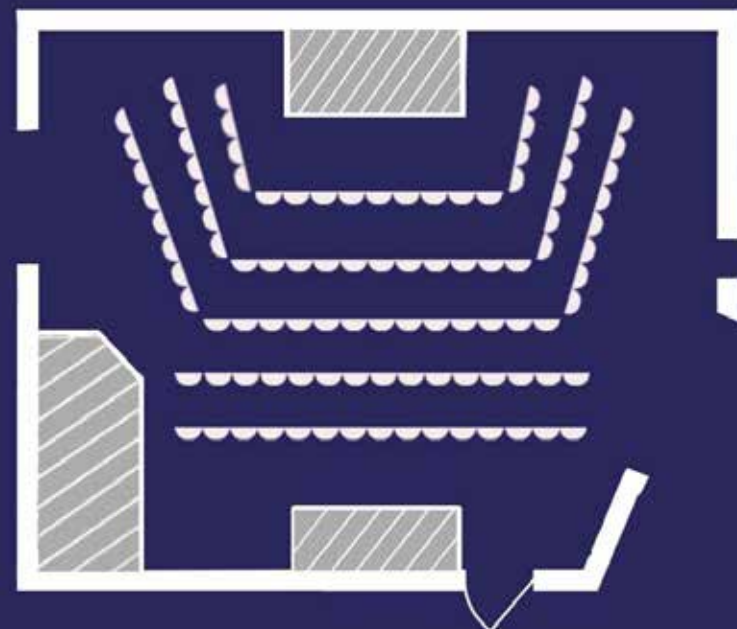


SHEAF ST.  
EXTERNAL PROMOTER

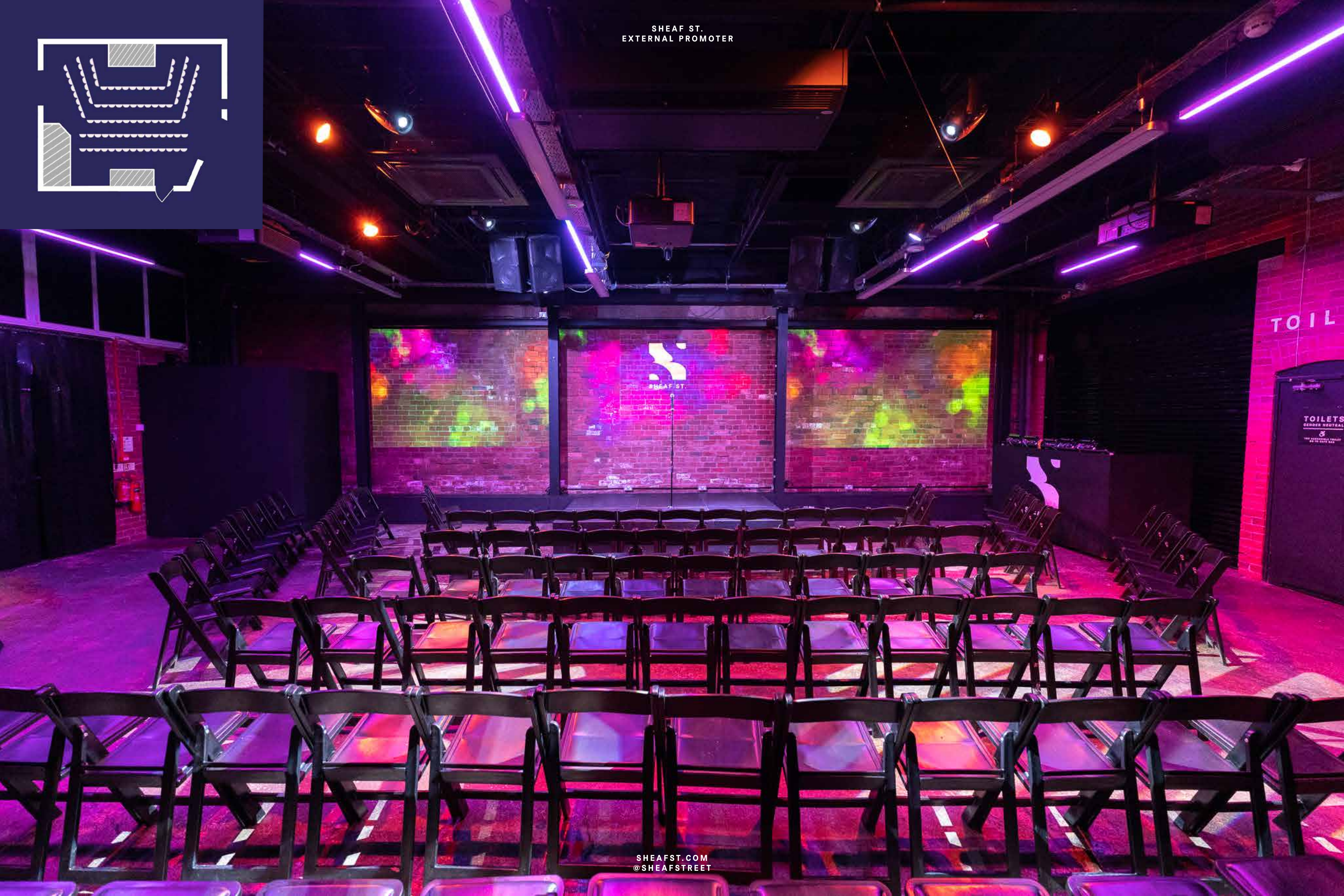


SHEAFST.COM  
@SHEAFSTREET



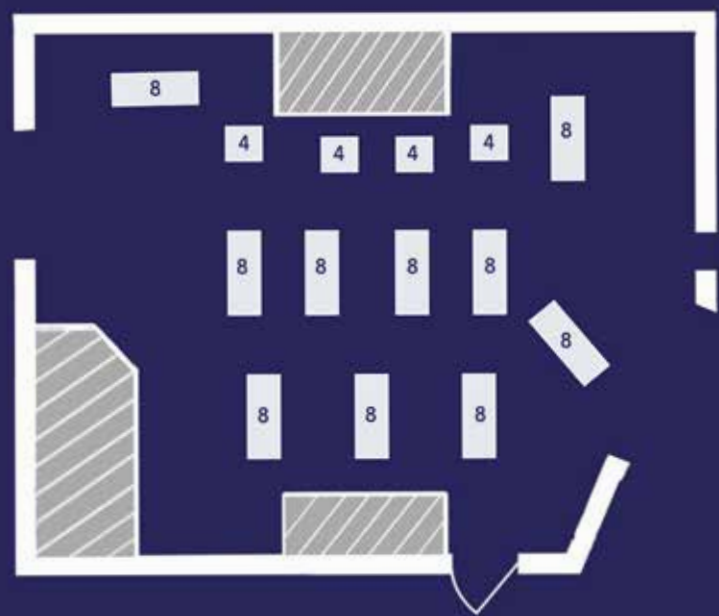


SHEAF ST.  
EXTERNAL PROMOTER



SHEAFST.COM  
@SHEAFSTREET





SHEAF ST.  
EXTERNAL PROMOTER



SHEAFST.COM  
@SHEAFSTREET



A woman with dark hair, wearing a blue and white patterned dress, is pointing her right index finger directly at the camera. She is wearing a blue beaded bracelet and a ring on her right hand. The background is a festive indoor setting with warm lighting, wooden paneling, and colorful decorations. The text "FURTHER INFO" is overlaid in the center in a large, white, sans-serif font.

# FURTHER INFO

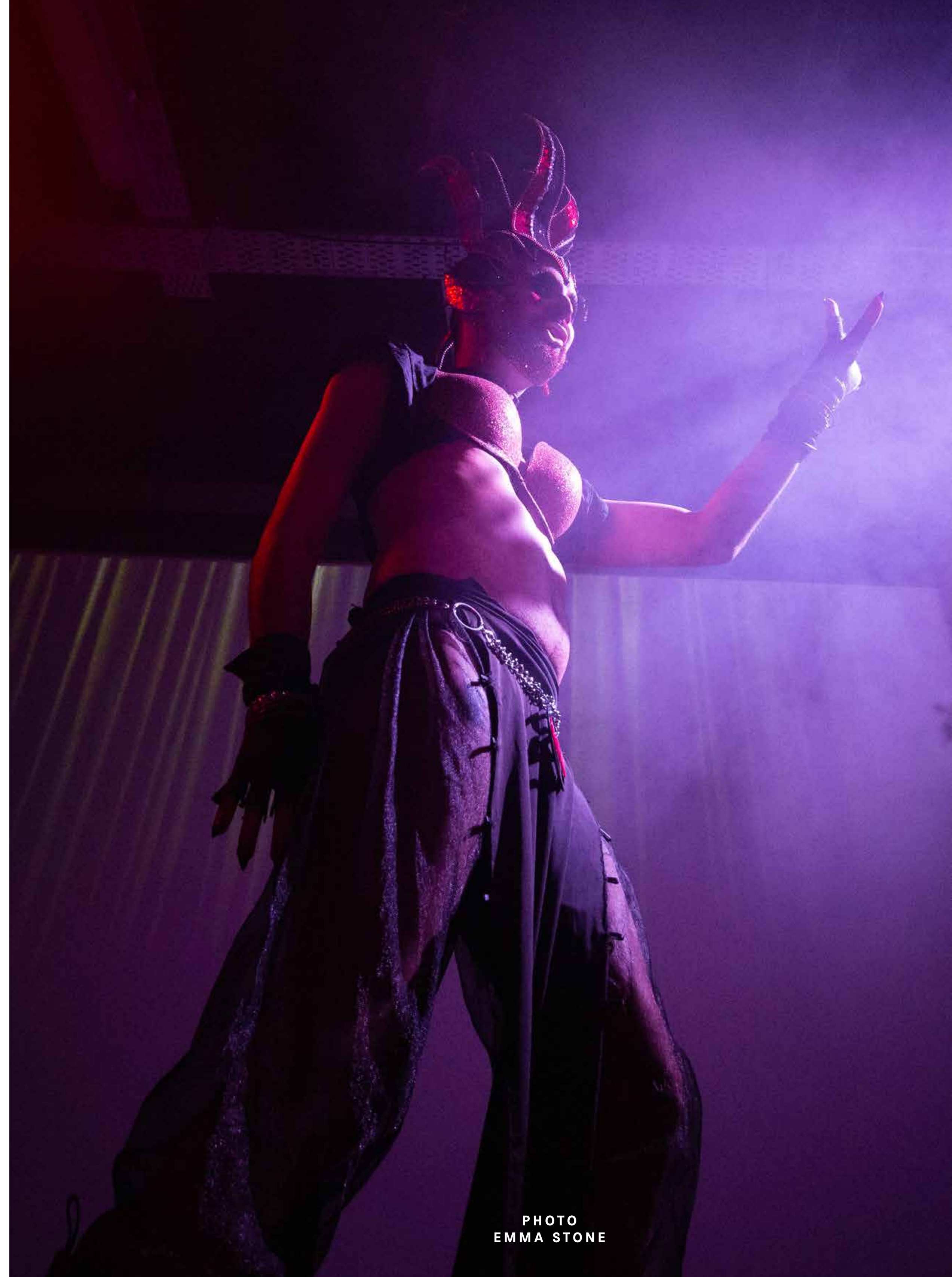


### {OPTIONAL EXTRAS}

- Storage pre or post event (POA)
- Additional setup time pre 6pm (£100ph)
- Late Closing - max 2am (£150ph)
- Sound Engineer for Bands (£45 per hour)
- Additional DJ kit (POA)
- Green Room for performers (£75 per hour)
- Additional microphone setups (POA)
- Additional Tech Staff (£30 per hour)
- Additional Security (£20 per hour)
- 32Amp/63Amp power (£100/£300 per day)
- One off fee for live bands (£50)
- Livestreaming (POA)
- Confetti cleanup (£100)

### {PROHIBITED}

- Hire of the Sheaf St Cafe Bar
- Bringing any alcohol and drugs onto site
- Any fire or pyrotechnic entertainment







## {CASHLESS}

Sheaf St is a completely CASHLESS venue.

We only accept card payments at all bars, the cloakroom and box office. This is standard practice at Sheaf St – it helps keep the venue and staff safe and speeds up the bars. For a full statement please visit

[sheafst.com/info](https://sheafst.com/info)

There is no option for cash on the door or box office. We provide equipment for door payments by card. We run event reports on a Tuesday where you will be notified of any card payments on the door. You receive 100% of all ticket sales.

## {PLASTIC CUPS}

Sheaf St operates a reusable plastic cup deposit scheme for all events.



## {MARKETING}

The main promotion and audience generation must come from you, the promoter. However, Sheaf St provides:

Facebook co-host listings | Inclusion on our events mail out | Share on instagram story

- A Facebook co-host invite is required
- We guarantee a minimum of one Facebook post and Instagram story
- We can display dedicated event posters within the venue. You must provide professionally designed and printed posters with approved artwork in A3 (portrait poster) or A5 (flyer) format for them to be used

All venue side promotion relies on prompt and proper marketing assets being provided by the promoters.







## {ZERO TOLERANCE POLICY}

Sheaf St. operates a Zero Tolerance Policy. We do not tolerate any harmful or disrespectful behaviours such as : Racism, Misogyny, Homophobia, Transphobia, Ableism, Ageism, Fatphobia.

Sheaf St. does not tolerate the use and consumption of drugs of any kind, unless medical. Our security team will search attendees if applicable.

We expect our promoters to adhere to our policy and be complicit in keeping attendees as safe as possible. Our security team are on hand on the night to help you if any issues arise.

We are a Good Night Out accredited venue, if you feel uncomfortable, please speak to a member of our security or bar team.

We are also part of Atrtitude is Everything Charter of Best Practise.



## {DECOR AND DAMAGES}

Decor is permitted providing the venues rules for hanging are adhered to. Decor must be removed immediately after your event.

Damages will be charged

## {ARTIST RIDERS}

You are permitted to bring in hospitality riders from outside the venue or purchase them from our bar

Generic riders are limited to 1 x crate of beer/cider (cans only) and 1 bottle of wine, spirits are prohibited from performer riders. For anything above this we must see the headline artists hospitality riders and sign off on this.

## {T&Cs}

Successful proposals will be sent a full set of terms and conditions to digitally sign prior to any event confirmation, along with deposit payment. Any breach in the terms and condition will result in the events cancellation and potential further charges.





A photograph of two men sitting on a brown leather couch, each holding a microphone. The man on the left is bald, wearing sunglasses and a dark jacket, with a white wristband on his left arm. The man on the right has blue hair and is wearing a colorful patterned shirt. They are in a room with a large green plant in the background and a white decorative screen. In the foreground, there is a white table with a small potted plant and two cans. The text 'FREQUENTLY ASKED QUESTIONS' is overlaid in the center in white capital letters.

# FREQUENTLY ASKED QUESTIONS





SHEAF ST.  
EXTERNAL PROMOTER

### {FAQs}

Q. What is the max capacity?

A. Standing 250

Seated 110

Q. When can we stay open until?

A. 12am as standard, 2am with additional charges

Q. When can we set up

A. Depending on our booking calander, 6pm

Q. Can we leave our decor up

A. Not without additional fees. Decor must be removed after the event

Q. Is the DJ kit included

A. Yes, we have everything you could need - see our tech spec above.

Q. Can we bring own sound system

A. No

Q. Can we bring a smoke machine

A. No, we have an in-house haze machine, no additional smoke/haze is permitted

SHEAFST.COM  
@SHEAFSTREET



### {FAQs}

Q. What size files do we need for visuals

A. See promoter pack for full details

Q. Can we bring more lighting or FX?

A. As standard, no

Q. Can we take cash on the door

A. No, Sheaf St. is a cashless venue - this is non negotiable.

Q. Can we provide our own security?

A. No, to uphold our licence we supply our own security team.

Q. Do you have a green room?

A. Yes, at an additional charge





# CONTACT US

{CONTACT}

[Click here](#)  
[to submit a proposal for your night at Sheaf St](#)

You can also contact  
[events@sheafst.com](mailto:events@sheafst.com) to request a proposal  
form or call us with any queries on  
+44 (0)113 245 9487



