

SHEAF ST.
WEDDING RECEPTIONS

SHEAF ST. WEDDING RECEPTIONS

SHEAFST.COM
@SHEAFSTREET



PHOTO CREDIT:
TIM DUNK PHOTOGRAPHY

{INTRODUCTION}

Our Event Space is a multifunctional blank canvas, suited to events of all shapes and sizes.

It's perfect for couples looking to create a DIY wedding reception party in a unique but well equipped space.

{WHAT WE DO}

- REALLY DECENT PARTIES
- INCLUDE A WHOLE LOT AS STANDARD
- A FUN RELAXED ENVIRONMENT

{WHAT WE DON'T DO}

- WEDDING CEREMONIES
{OF ANY KIND}
- BIG SIT DOWN DINNERS
- CONVENTIONAL STUFFY WEDDINGS



THE VENUE



{THE EVENT SPACE}

Our main room, a highly spec'd and fully rennovated former belt factory in the city centre of Leeds.

We provide everything you need to run an unbeatable post wedding party, with your own bar, toilets, sound, lighting, visuals, staging, seating, tables and other top spec party facilities.

{THE YARDEN}

'The Yarden' our outdoor terrace comes as standard with all wedding reception bookings. It can simply be used as a smoking area or has a whole range of possibilities for providing alfresco space for your party.

Equipped with outdoor heaters, festoon lighting, power points, retractable rain covers (not full cover), raised DJ booth, benches, planters and serving hatch.

It's the perfect spot for outdoor food, an extra bar, entertainment - or simply somewhere for kids big or small to let off steam.



SHEAF ST.
WEDDING RECEPTIONS

HOW IT WORKS

PHOTO CREDIT:
THE CURRIES PHOTOGRAPHY



{HOW IT WORKS}

For our base package we charge
£1,920 (inc VAT)

This covers hire fee and sets you up with everything you need to throw a great party. We have a range of optional extras if you want to really pop a cherry on top of your event.

As standard you get access to the Event Space and The Yarden from 9am - 1am on either a Saturday or a Sunday.

{WHAT'S INCLUDED}

- Exclusive use of Event Space and Yarden
- Access from 9am-1am
- Fully stocked private bar
- Bar staff
- Modular staging system
- Pioneer Pro Audio PA system
- Industry Standard Pioneer Pro DJ kit
- Movable DJ Booth
- Wired Microphone
- Tressle Tables
- Benches
- Chairs
- Private Toilets
- Accessible Toilet
- Lighting Rig
- Security Personel
- x3 Projectors - Huge Screen Projection
- 13Amp power
- Dedicated Event Contact for pre planning
- Event Manager/Tech Support for event duration



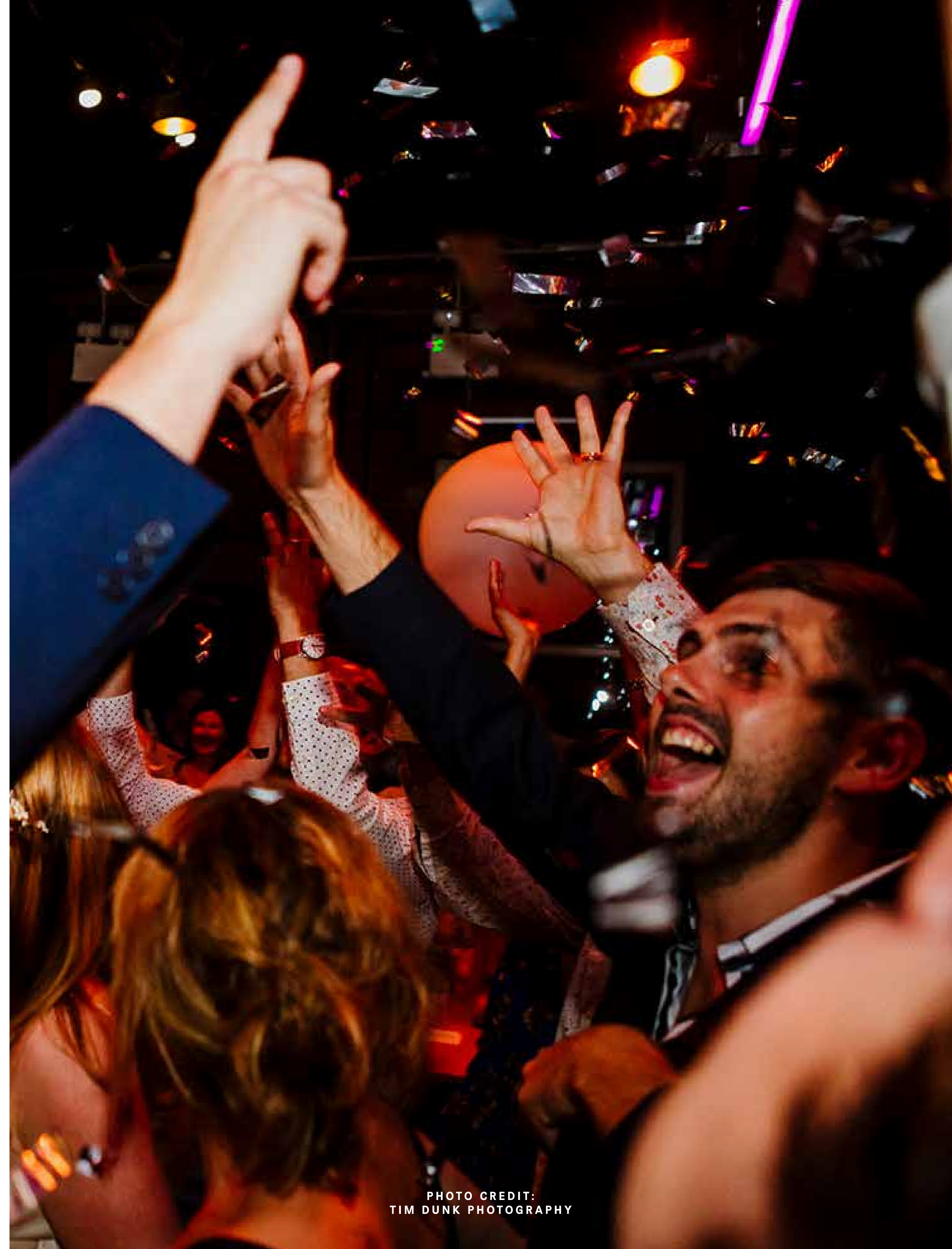
{OPTIONAL EXTRAS}

- Additional hours access (£150 per hour)
- Storage pre or post event (POA)
- Waiting staff (£15 per person per hour)
- Sound Engineer for Bands (£45 per hour)
- Additional DJ kit (POA)
- Private breakout space (from £30 per hour)
- Green Room for performers (£75 per hour)
- Custom Sheaf St 'Cinema Letters' (£45)
- Additional microphone setups (POA)
- Additional Tech Staff (£40 per hour)
- Additional Security (£25 per hour)
- 32Amp/63Amp power (£100/£300 per day)
- One off fee for live bands (£100)
- External catering buyout fee (£250)
- Livestreaming (POA)
- Additional Glassware (POA)
- Dedicated Yarden Bar (POA)
- Confetti cleanup (£100)
- Ping Pong Table (£25)

{ALL PRICES EX VAT}

{PROHIBITED}

- Hire of the Sheaf St Bar
- Any form of ceremony
- Any fire or pyrotechnic entertainment



{GUEST NUMBERS}

For wedding receptions our space is most suitable for guest numbers between

50-180

The capacity for your particular event will depend entirely on the specific layout of the room, staging, seating, food options, etc.

We recommend the best way to use the space is with a mixture of casual seating and a dance floor area.





{FOOD}

Sheaf St has its own in house catering provision - freshly prepared on site from our well renowned cafe.

We offer a buffet style dining experience, one that is stripped backed and relaxed. We don't do large sit down dinners, rather a sociable festival like feast.

We have a sample menu available to view. This changes at the chef's discretion seasonally.

our prices start from £6 per head.

Maximum capacity for our internal catering is 60 guests.

It is possible to use a third party catering or a street food provider - we charge a £250 buyout fee for this option.



{DRINKS}

We can offer a simple paying bar or pre paid drinks packages. These can include:

FIZZ ON ARRIVAL

ICE BUCKETS OF BEVARAGES

FREE BAR

BESPOKE PUNCH COCKTAILS

DRINKS TOKENS

WINE ON TABLE

[For an idea on pricing, please visit our bar menu](#)

Custom packages and corkage deals are available on request.



PHOTO CREDIT:
TIM DUNK PHOTOGRAPHY

{EXTERNAL SUPPLIERS}

Using external suppliers can really make your party that extra bit special. Decor, flowers, street food, photography, bands, performers, photo booths, DJs, and much more, are all welcome at Sheaf St.

If you are using any external suppliers you will need to provide contact details and have their involvement checked and signed off by us. Some suppliers may require a buyout fee.

Your dedicated Sheaf St event contact will work with your supplier to ensure everything runs smoothly and any relevant regulations are met.

{KIDS}

Admittance of attendees under 18 is allowed. All attendees under 18 must be supervised at all times.

A DJ booth setup featuring a tablet mounted on a boom arm displaying a DJ software interface, a laptop with a similar interface, and a mixer in the foreground. The scene is dimly lit with blue and red ambient lighting.

TECH SPECS



SHEAF ST.
WEDDING RECEPTIONS

{SOUND}

X5 - POWERSOFT K SERIES AMPS

X4 PIONEER XY218S SUBS

X4 PIONEER XY122 12" PLUS 2" MID HIGHS

X8 PIONEER XY81 8" PLUS 1" MID HIGHS

X4 PIONEER XPRS 12 ACTIVE MONITORS

X2 PIONEER XPRS 10 ACTIVE MONITORS

MIDAS M32 SOUND DESK

{IN-HOUSE DJ EQUIPMENT}

STANDARD KIT INCLUDED IN BASE FEE

X1 PIONEER DJM900 NEXUS 2

X2 PIONEER CDJ3000

X2 TECHNICS 1210S MK 2

OPTIONAL EXTRAS SUBJECT TO AVAILABILITY

(QUOTE ON REQUEST)

X1 PIONEER V10

X1 PIONEER DJM900 NEXUS 2

X4 PIONEER CDJ3000

X2 PIONEER CDJ2000 NEXUS 2

X2 TECHNICS 1210S MK 7

X1 PIONEER RMX1000

X1 PIONEER DJS1000

X1 MASTER SOUNDS RADIUS 4 ROTARY MIXER

X1 ALLEN & HEATH XONE 92

SHEAFST.COM
@SHEAFSTREET

{LIGHTING}

FLUORESCENT HOUSE LIGHTS
TOUCH SCREEN PC RUNNING AVOLITES TITAN MOBILE WITH
TITAN MOBILE CONTROLLER
12 X PROLIGHT FLATCOB 80 LED PAR
6 X PROLIGHT CRYSTAL 100W LED MOVING LIGHT FIXTURE
9 X CUSTOM MADE LED BATTEN STRIPS
HAZE MACHINE

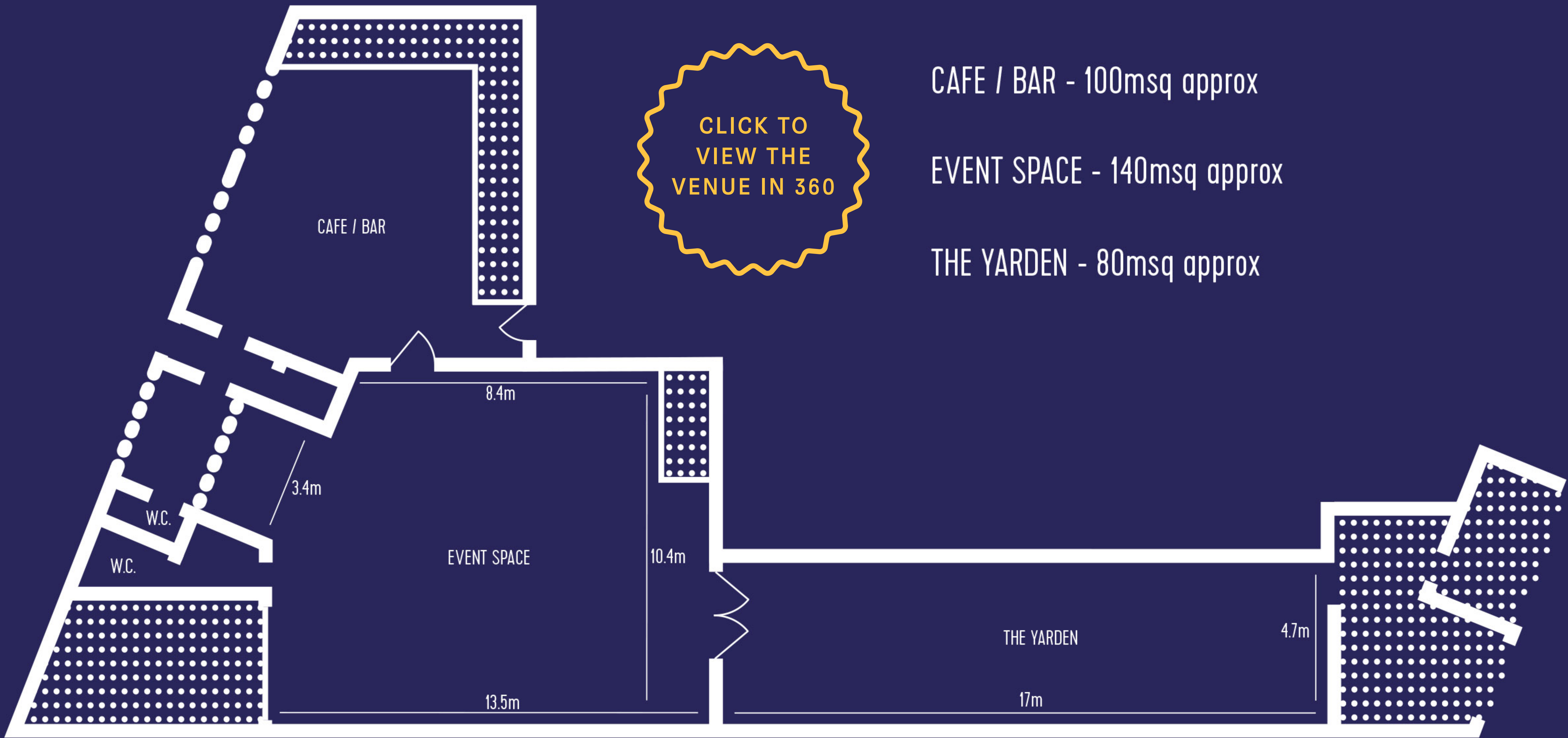
{PROJECTION}

3 X 5M RETRACTABLE PROJECTION SCREENS
3 X FULL HD PROJECTORS - HDMI INPUT ONLY (NO VGA)
POWERED BY RESOLUME 7 ON TRIPLE WIDE SCREEN
- PLEASE REQUEST CORRECT VIDEO FORMAT AND
RESOLUTION.

{STAGING AND BOOTH}

MODULAR STAGING.
MOVABLE DJ BOOTH.
MULTIPLE SETUP OPTIONS.





CAFE / BAR - 100msq approx

EVENT SPACE - 140msq approx

THE YARDEN - 80msq approx

CLICK TO
VIEW THE
VENUE IN 360



{CASHLESS}

Sheaf St is a completely CASHLESS venue. We only accept card payments at all bars. This is standard practice at Sheaf St – it helps keep the venue and staff safe and speeds up the bars. For a full statement please [click here](#)

{ACCESSIBILITY}

Sheaf St is a heritage building but we have made efforts to be an accessible venue within those constraints. We also always try to accommodate any specific needs.

There is a single step at our main entrance which we have a portable ramp for. Once in the building, everything is level. There are additional step free routes into the building.

Our main toilets do not have an accessible cubicle, however we have a fully accessible toilet in our adjoining workspace just a short distance away.

We have no lowered bars however our friendly bar staff are always on hand to help.

A hearing loop is in place in our event space.

{LOCAL INFO}

PARKING

We do not have any dedicated parking. There is a Pay and Display car park nextdoor to our building until 9.30pm. This also has 3 accessible parking bays and electric charging points. There is also pay and display parking nearby (Sheaf St, Cudbear Street, Hunslet Road) payment by phone or via the RingGo app (no cash).

PUBLIC TRANSPORT

- 8 minute walk from Leeds Train Station.
 - 6 minute walk from Leeds City Bus station.
- For more information please [click here](#).

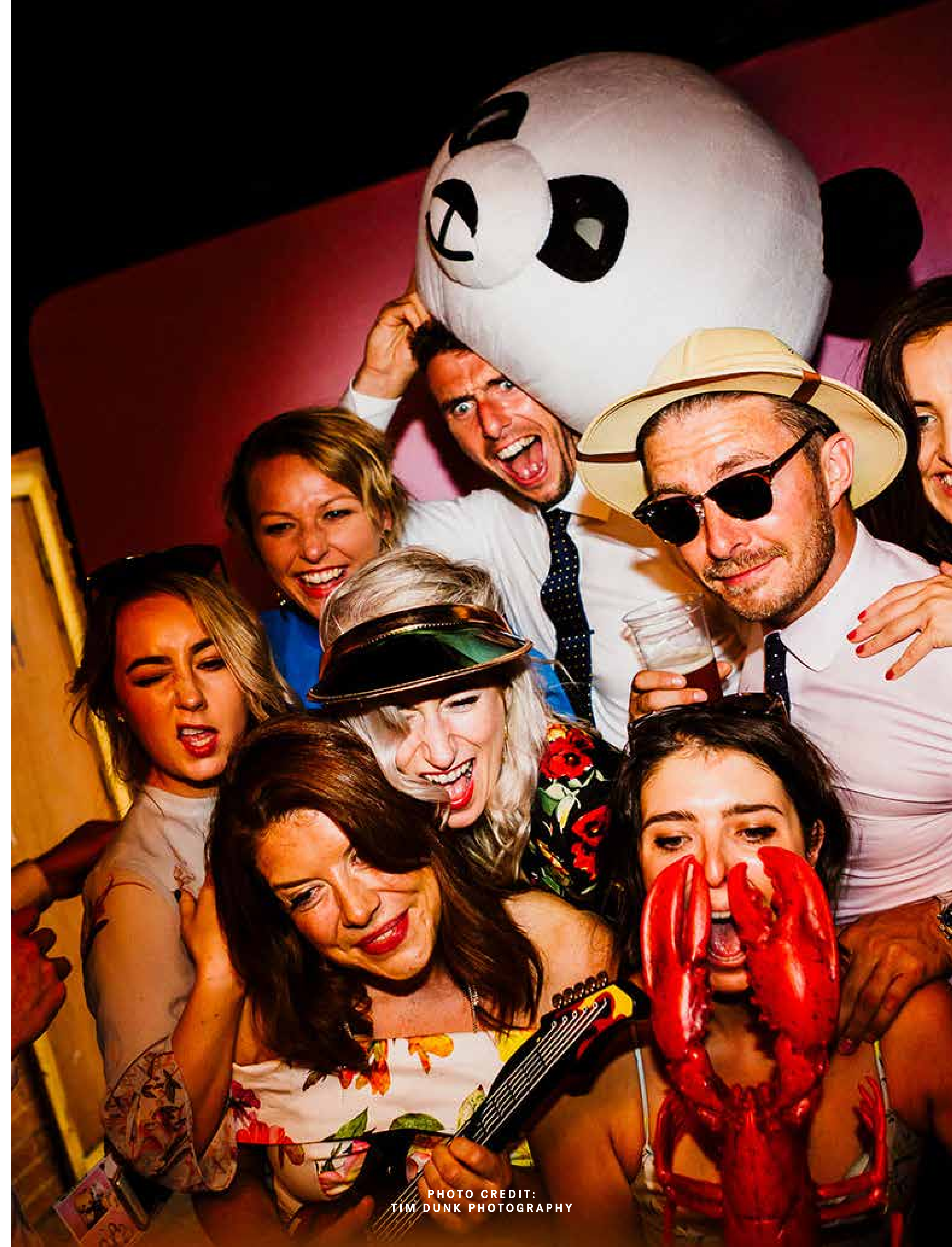
SHEAF ST CAFE & BAR

The Sheaf St Cafe and Bar is open 7 days a week from 8:30 til late, and remains open to the public during wedding parties.

Our closest essentials shop is Marks and Spencers which is 3 minute walk away at Crown Point Retail Park.

ADDRESS

3 Sheaf Street, Leeds
West Yorkshire
LS10 1HD



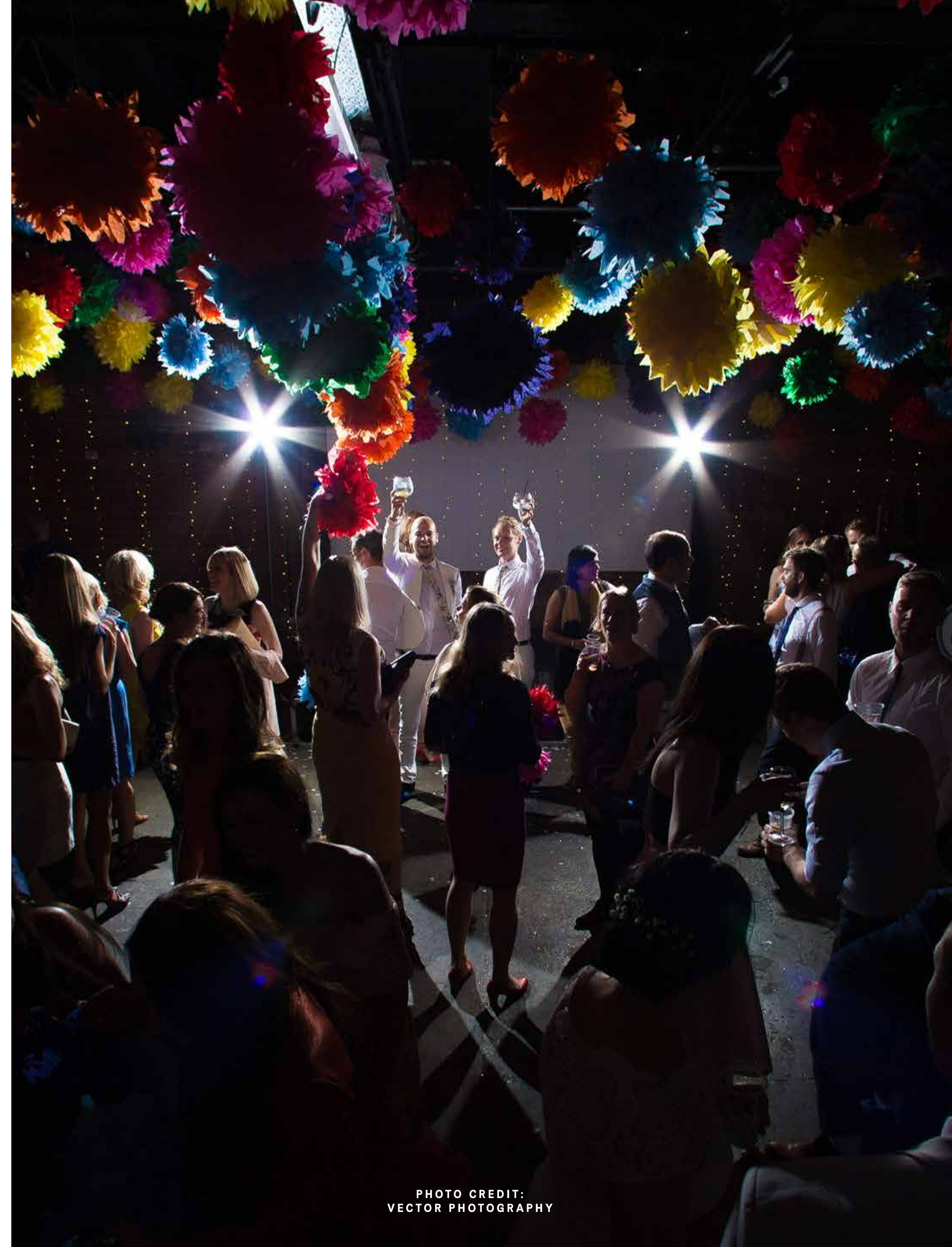
{PAYMENTS and T&Cs}

A 50% deposit of your total cost is due at time of booking. The remaining balance is due no later than 3 months in advance of your date.

Deposits are non refundable, but are transferable.

Successful booking applications will be sent a full set of terms and conditions to digitally sign prior to date confirmation, along with deposit payment.

Any breach of the terms and conditions will result in the events cancellation and loss of deposit.



{BOOKING PROCESS}

Contact us if you'd like to book a visit.

|

[Fill out an application form here.](#)

|

We check out availability and your requirements then provide a total cost.

|

You are sent a T&C's form and an invoice for your deposit.

|

Your event is confirmed once deposit clears.

|

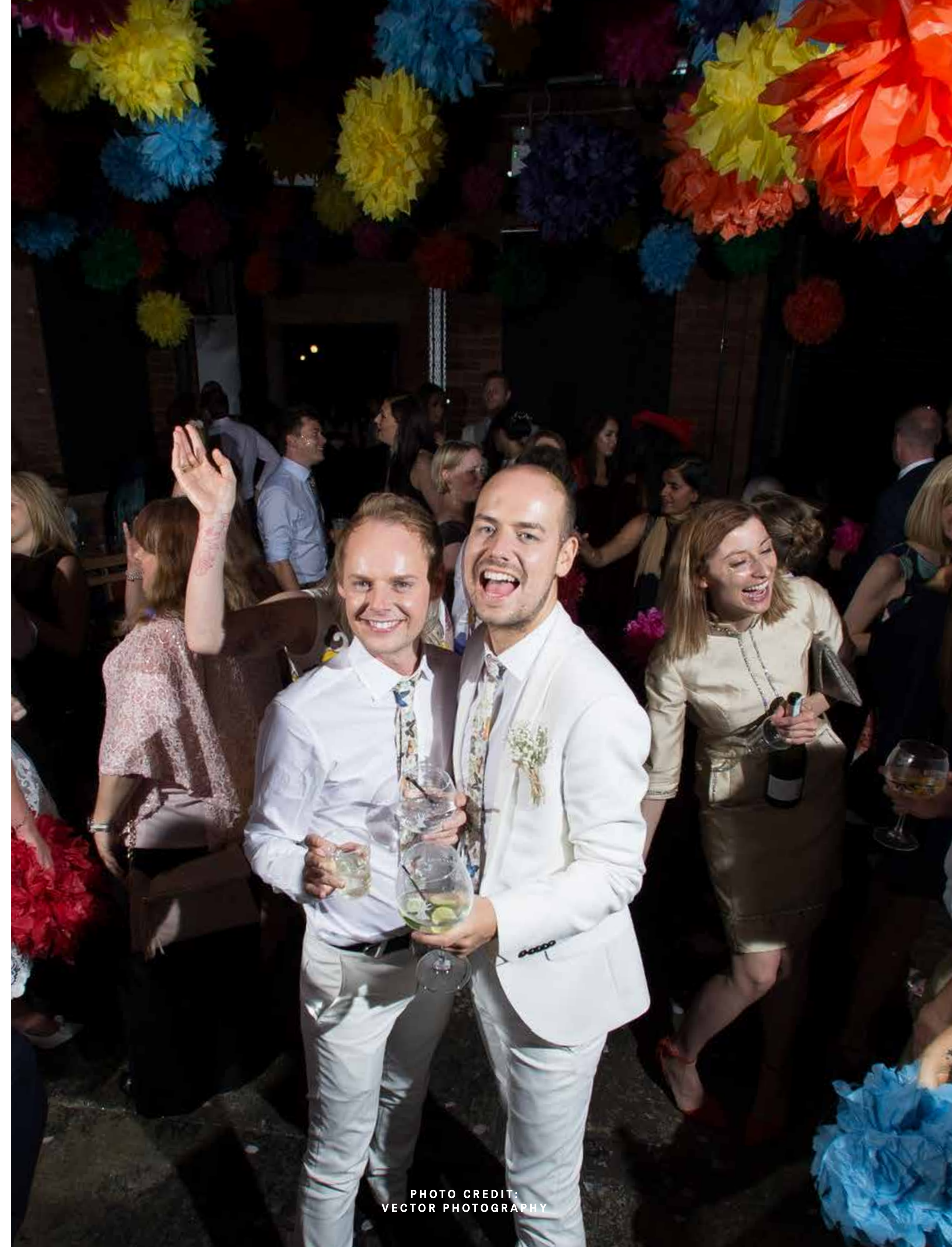
You work with our Event Manager to advance your event, catering, layout, running order, tech needs, and other requirements.

|

3 months prior to your event your remaining balance is due.

|

Your event takes place.





CONTACT US

{CONTACT}

contact events@sheafst.com
or call us with any queries on
+44 (0)113 245 9487

[Click here](#)
[to submit an application for your](#)
[wedding reception at Sheaf St.](#)

