

SHEAF ST.
WEDDING RECEPTIONS

SHEAF ST. WEDDING RECEPTIONS

SHEAFST.COM
@SHEAFSTREET



PHOTO CREDIT:
TIM DUNK PHOTOGRAPHY

{INTRODUCTION}

Our Event Space is a multifunctional blank canvas, suited to events of all shapes and sizes.

It's perfect for couples looking to create a no fuss DIY wedding reception party in a unique but well equipped space.

{WHAT WE DO}

- REALLY DECENT PARTIES
- INCLUDE A WHOLE LOT AS STANDARD
- A FUN RELAXED ENVIRONMENT

{WHAT WE DON'T DO}

- WEDDING CEREMONIES
{OF ANY KIND}
- SIT DOWN DINNERS
- CONVENTIONAL STUFFY WEDDINGS



THE VENUE





{THE EVENT SPACE}

Our main room, a highly spec'd and fully rennovated former belt factory in the city centre of Leeds.

We provide everything you need to run an unbeatable post wedding party, with your own bar, toilets, sound, lighting, visuals, staging, seating, tables and other top spec party facilities.

{THE YARDEN}

'The Yarden' our outdoor terrace comes as standard with all wedding reception bookings. It can simply be used as a smoking area or has a whole range of possibilities for providing alfresco space for your party.

Equipped with outdoor heaters, festoon lighting, power points, retractable rain covers (not full cover), raised DJ booth, benches, planters and serving hatch.

It's the perfect spot for outdoor food, an extra bar, entertainment - or simply somewhere for kids big or small to let off steam.



SHEAF ST.
WEDDING RECEPTIONS

HOW IT WORKS

PHOTO CREDIT:
THE CURRIES PHOTOGRAPHY



{HOW IT WORKS}

Our Event Space Hire works on Seasonal Pricing

JANUARY	£2480
FEBRUARY	£2480
MARCH	£2480
APRIL	£2880
MAY	£2880
JUNE	£2880
JULY	£3240
AUGUST	£3240
SEPTEMBER	£3240
OCTOBER	£3240
NOVEMBER	£2480
DECEMBER	£3820

{All Prices INC VAT 2022}

This covers the hire of our Event Space and Yarden
from 9am - 1am on a Saturday or Sunday

{WHAT'S INCLUDED}

- Exclusive use of Event Space and Yarden
- Access from 9am-1am
- Fully stocked private bar
- Bar staff and Bar Manager
- Modular staging system
- Pioneer Pro Audio PA system
- Industry Standard Pioneer Pro DJ kit
- Movable DJ Booth
- x2 Wireless Microphone
- 15 Trestle Tables
- 30 Benches
- 95 Foldable Chairs
- Recycled Plastic Water Cups
- Private Toilets
- Accessible Toilet
- Private Breakout Space
- Industry Standard Lighting Rig
- Security Personnel
- x3 Projectors - Huge Screen Projection
- Haze Machine
- 13Amp power
- Dedicated Event Manager for pre planning
- Event Manager/Tech Support for event duration



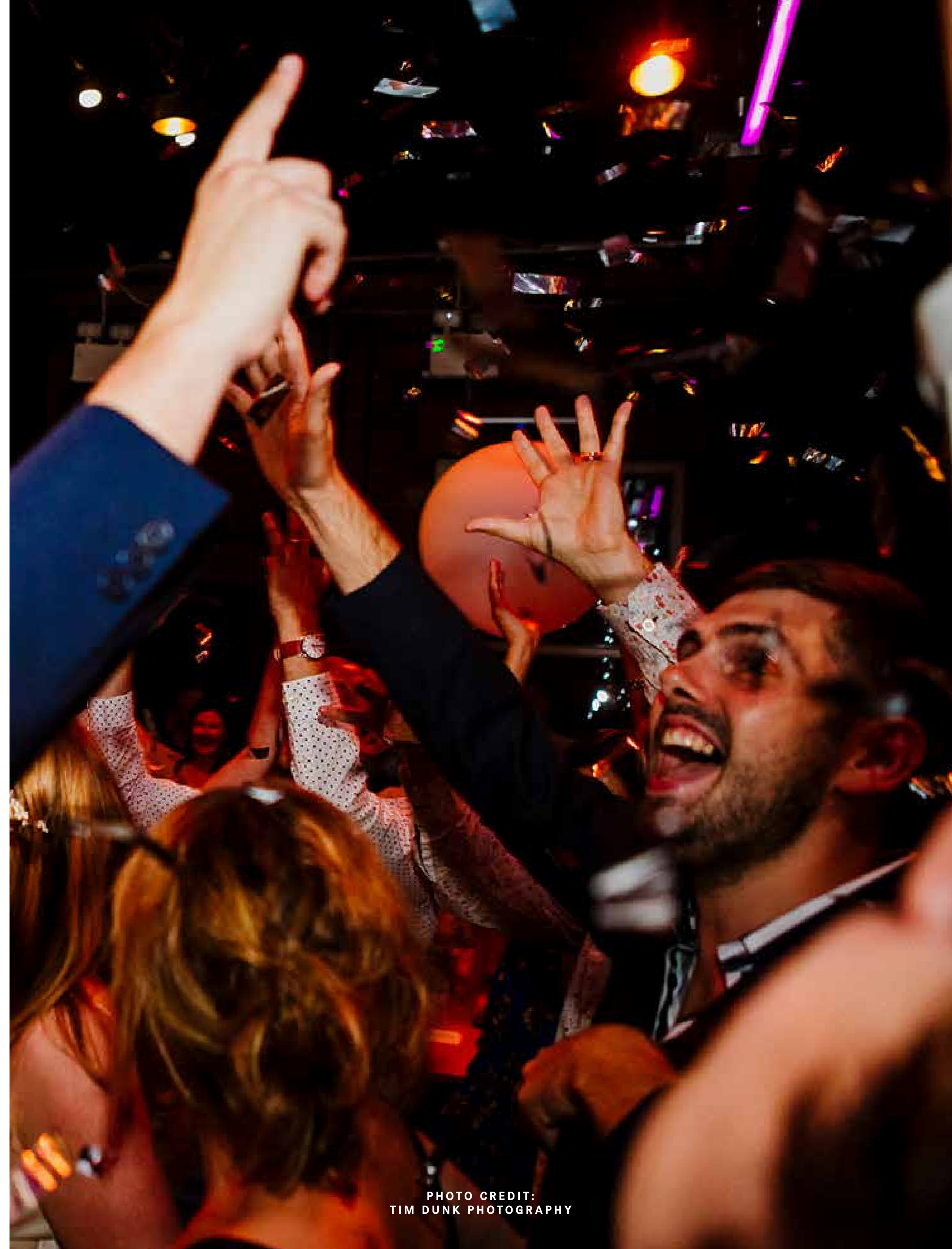
{OPTIONAL EXTRAS}

- Additional hours access (£150 per hour)
- Storage pre or post event (POA)
- Sound Engineer for Bands (£45 per hour)
- Additional DJ kit (POA)
- Green Room for performers (£75 per hour)
- Custom Sheaf St 'Cinema Letters' (£45)
- Additional microphone setups (POA)
- Additional Tech Staff (£40 per hour)
- Additional Security (£25 per hour)
- 32Amp/63Amp power (£100/£300 per day)
- One off fee for live bands (£100)
- Livestreaming (POA)
- Additional Glassware (POA)
- Dedicated Yarden Bar (POA)
- Confetti cleanup (£100)

{ALL PRICES EX VAT}

{PROHIBITED}

- Hire of the Sheaf St Bar
- Any form of ceremony
- Any fire or pyrotechnic entertainment





{GUEST NUMBERS}

For wedding receptions our space is most
suitable for guest numbers between

120 - 180

{We can seat up to 95 guests,
180 max capacity for standing}

The capacity for your particular event will
depend entirely on the specific layout of the
room, staging, seating, food options, etc.

We recommend the best
way to use the space is with a mixture of
casual seating and a dance floor area.



{FOOD}

Sheaf St does not provide catering
for Weddings.

We have a list of fantastic vendors
we have worked with in the past:

Manjit's Kitchen

Ox Club

BBQ & Buffets

Woodfire Pizza Co

Sato

Luigi Street Food Italiano

We require a £150 fee for caterers
using our space



{DRINKS}

We can offer a simple paying bar or pre paid drinks packages. These can include:

OPEN BAR

FIZZ ON ARRIVAL

ICE BUCKETS OF BEVARAGES

BESPOKE PUNCH COCKTAILS

DRINKS TOKENS

WINE ON TABLE

[For an idea on pricing, please visit our bar menu](#)

Custom packages and corkage deals are available on request.



{EXTERNAL SUPPLIERS}

Using external suppliers can really make your party that extra bit special. Decor, flowers, street food, photography, bands, performers, photo booths, DJs, and much more, are all welcome at Sheaf St.

If you are using any external suppliers you will need to provide contact details and have their involvement checked and signed off by us. Some suppliers may require a buyout fee.

Your dedicated Sheaf St event contact will work with your supplier to ensure everything runs smoothly and any relevant regulations are met.

{KIDS}

Admittance of attendees under 18 is allowed. All attendees under 18 must be supervised at all times.

A DJ booth setup featuring a tablet mounted on a stand, a large monitor displaying a DJ software interface, and a professional mixer with various knobs and buttons. The scene is dimly lit with blue and purple ambient lighting.

TECH SPECS



{SOUND}

X5 - POWERSOFT K SERIES AMPS

X4 PIONEER XY218S SUBS

X4 PIONEER XY122 12" PLUS 2" MID HIGHS

X8 PIONEER XY81 8" PLUS 1" MID HIGHS

X4 PIONEER XPRS 12 ACTIVE MONITORS

X2 PIONEER XPRS 10 ACTIVE MONITORS

MIDAS M32 SOUND DESK

{IN-HOUSE DJ EQUIPMENT}

STANDARD KIT INCLUDED IN BASE FEE

X1 PIONEER DJM900 NEXUS 2

X2 PIONEER CDJ3000

X2 TECHNICS 1210S MK 2

OPTIONAL EXTRAS SUBJECT TO AVAILABILITY

(QUOTE ON REQUEST)

X1 PIONEER V10

X1 PIONEER DJM900 NEXUS 2

X4 PIONEER CDJ3000

X2 PIONEER CDJ2000 NEXUS 2

X2 TECHNICS 1210S MK 7

X1 PIONEER RMX1000

X1 PIONEER DJS1000

X1 MASTER SOUNDS RADIUS 4 ROTARY MIXER

X1 ALLEN & HEATH XONE 92

{LIGHTING}

FLUORESCENT HOUSE LIGHTS
TOUCH SCREEN PC RUNNING AVOLITES TITAN MOBILE WITH
TITAN MOBILE CONTROLLER
12 X PROLIGHT FLATCOB 80 LED PAR
6 X PROLIGHT CRYSTAL 100W LED MOVING LIGHT FIXTURE
9 X CUSTOM MADE LED BATTEN STRIPS
HAZE MACHINE

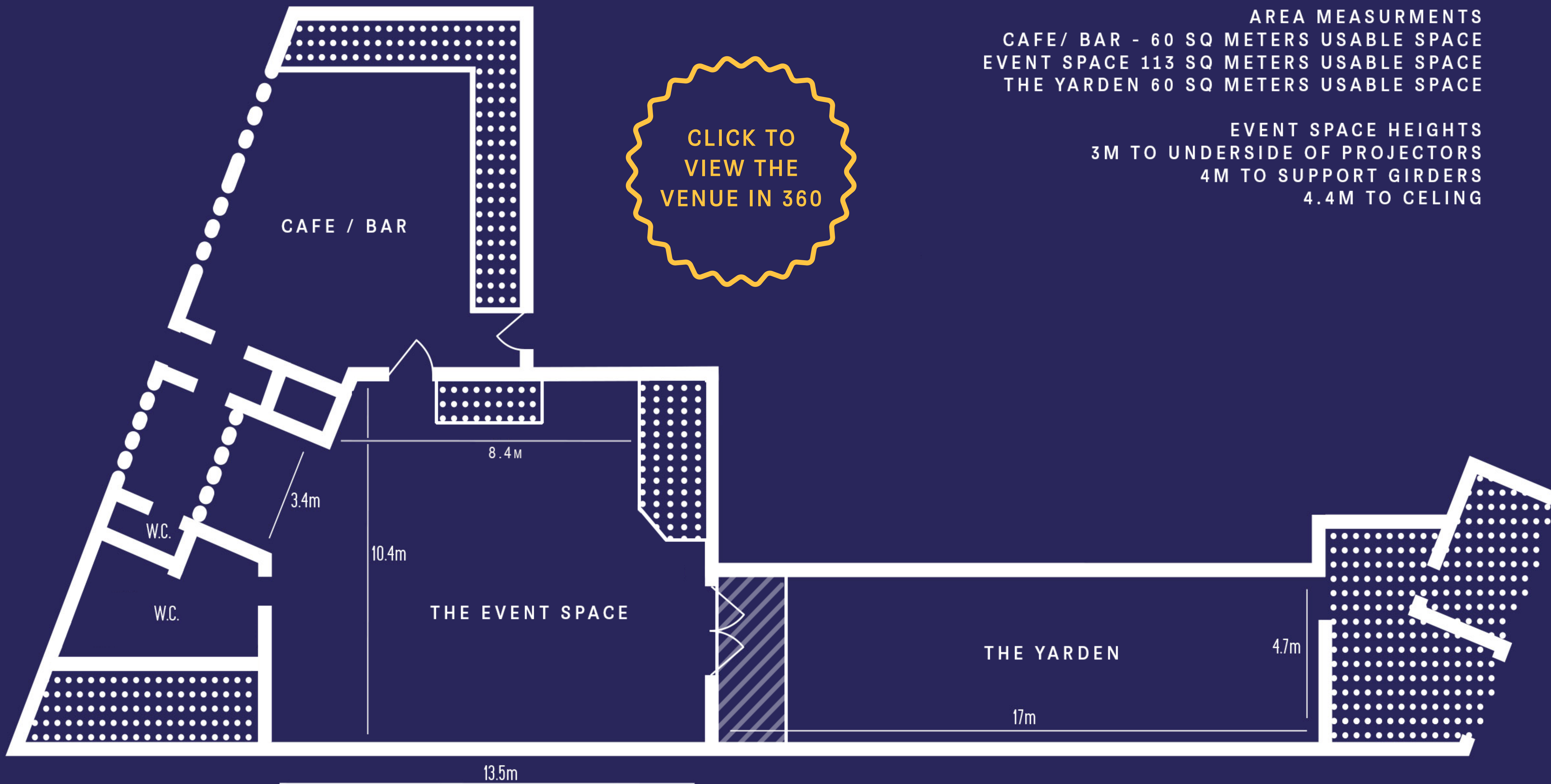
{PROJECTION}

3 X 5M RETRACTABLE PROJECTION SCREENS
3 X FULL HD PROJECTORS - HDMI INPUT ONLY (NO VGA)
POWERED BY RESOLUME 7 ON TRIPLE WIDE SCREEN
- PLEASE REQUEST CORRECT VIDEO FORMAT AND
RESOLUTION.

{STAGING AND BOOTH}

MODULAR STAGING.
MOVABLE DJ BOOTH.
MULTIPLE SETUP OPTIONS.





AREA MEASUREMENTS
CAFE / BAR - 60 SQ METERS USABLE SPACE
EVENT SPACE 113 SQ METERS USABLE SPACE
THE YARDEN 60 SQ METERS USABLE SPACE

EVENT SPACE HEIGHTS
3M TO UNDERSIDE OF PROJECTORS
4M TO SUPPORT GIRDERS
4.4M TO CEILING



{CASHLESS}

Sheaf St is a completely CASHLESS venue. We only accept card payments at all bars. This is standard practice at Sheaf St – it helps keep the venue and staff safe and speeds up the bars. For a full statement please [click here](#)

{ACCESSIBILITY}

Sheaf St is a heritage building but we have made efforts to be an accessible venue within those constraints. We also always try to accommodate any specific needs.

There is a single step at our main entrance which we have a portable ramp for. Once in the building, everything is level. There are additional step free routes into the building.

Our main toilets do not have an accessible cubicle, however we have a fully accessible toilet in our adjoining workspace just a short distance away.

We have no lowered bars however our friendly bar staff are always on hand to help.

A hearing loop is in place in our event space.

{LOCAL INFO}

PARKING

We do not have any dedicated parking. There is a Pay and Display car park nextdoor to our building until 9.30pm. This also has 3 accessible parking bays and electric charging points. There is also pay and display parking nearby (Sheaf St, Cudbear Street, Hunslet Road) payment by phone or via the RingGo app (no cash).

PUBLIC TRANSPORT

- 0.6 mile walk from Leeds Train Station.
 - 0.5 mile walk from Leeds City Bus station.
- For more information please [click here](#).

SHEAF ST CAFE & BAR

The Sheaf St Cafe and Bar is open 7 days a week from 8:30 til late, and remains open to the public during wedding parties.

Our closest essentials shop is Marks and Spencers which is 300 meter walk away at Crown Point Retail Park.

ADDRESS

3 Sheaf Street, Leeds
West Yorkshire
LS10 1HD



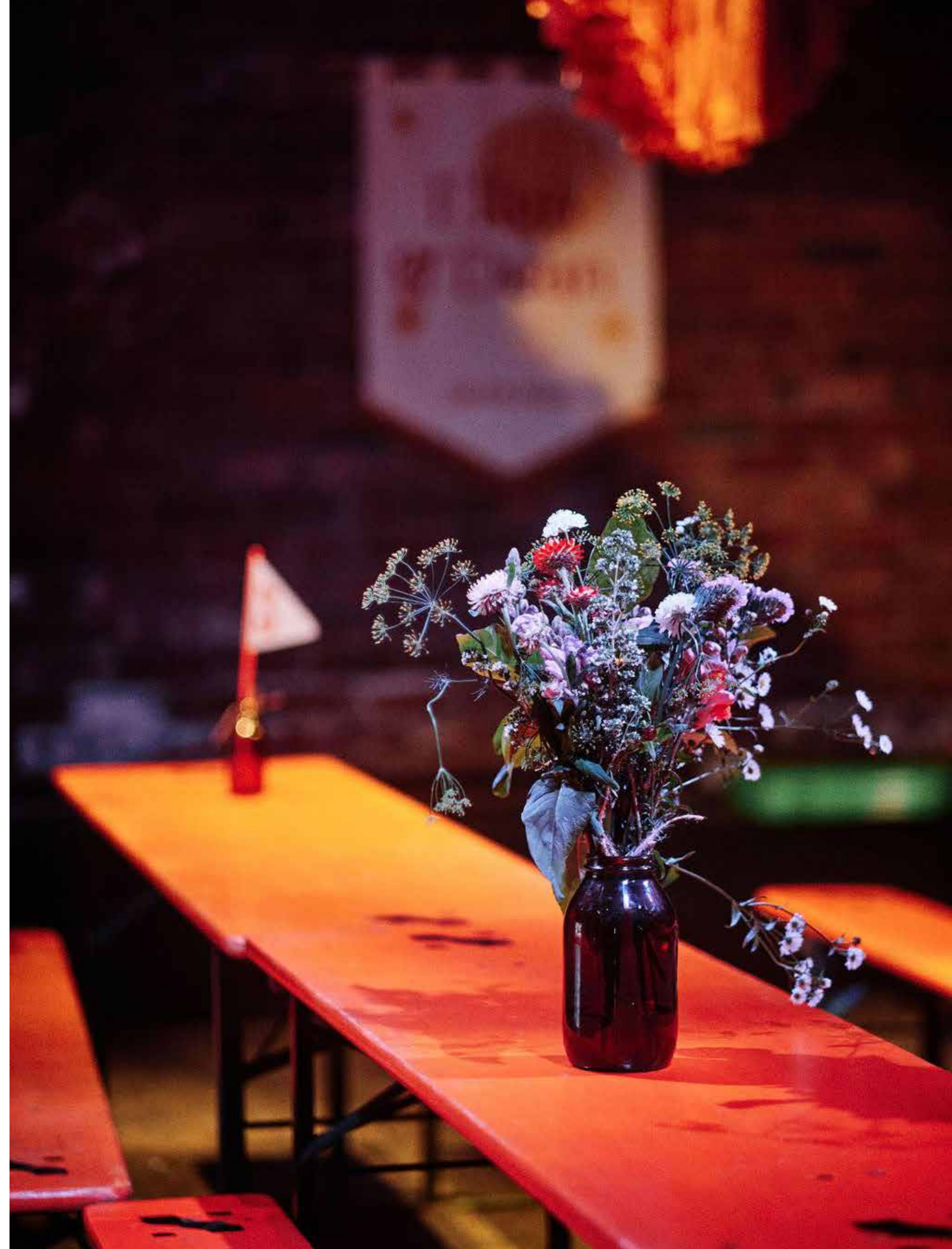
{PAYMENTS and T&Cs}

A 50% advance of your total hire cost is due at time of booking to secure your date. The remaining balance is due 3 months in advance of your date.*

*For instalment payments a 10% admin fee is applicable

Successful booking applications will be sent a full set of terms and conditions to digitally sign prior to date confirmation, along with advancing payment. Your date is confirmed once T&C's have been signed and deposit is cleared.

Any breach of the terms and conditions will result in the events cancellation and loss of deposit.



{BOOKING PROCESS}

Contact us if you'd like to book a visit.

|

[Fill out an application form here.](#)

|

We check out availability and your requirements then provide a total cost.

|

You are sent a T&C's form and an invoice for your deposit.

|

Your event is confirmed once deposit clears and T&C's have been signed.

|

You work with our Event Manager to advance your event, layout, running order, tech needs, and other requirements.

|

3 months prior to your event your remaining balance is due.

|

Your event takes place.

|

You live happily ever after!





SHEAF ST.
WEDDING RECEPTIONS

{CONTACT}

contact events@sheafst.com
or call us with any queries on
+44 (0)113 245 9487

[Click here](#)
to submit an application for your
wedding reception at Sheaf St

SHEAFST.COM
@SHEAFSTREET

